

WAAS CH 65601 W09A	APP CRS 094°	Rwy Idg TDZE 33 Apt Elev 33	6000
--	------------------------	---	-------------

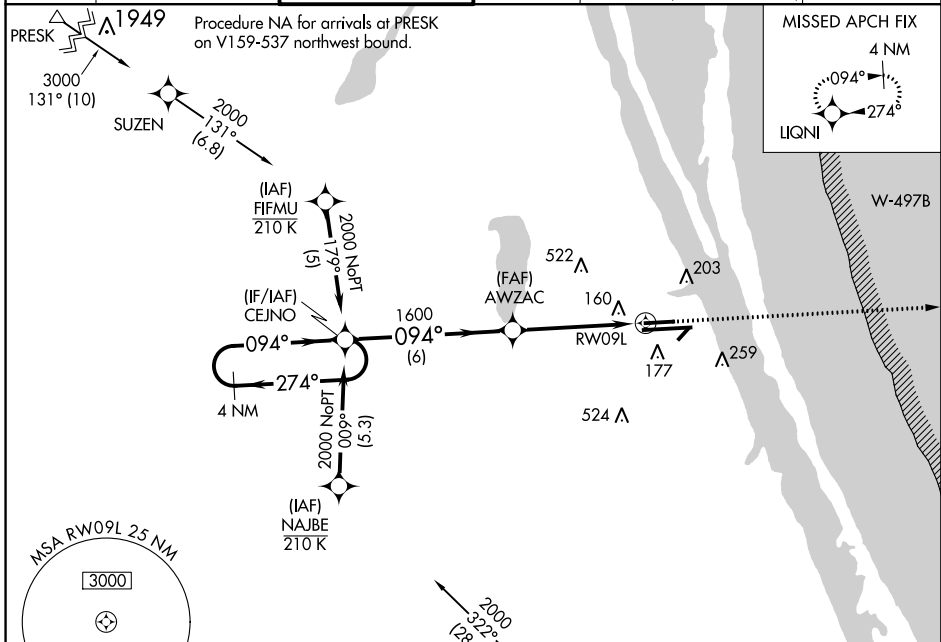
RNAV (GPS) RWY 9L

MELBOURNE INTL (MLB)

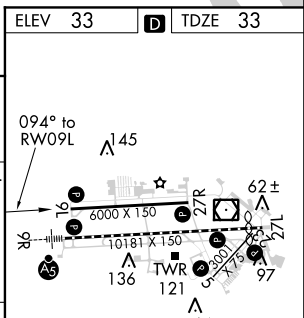
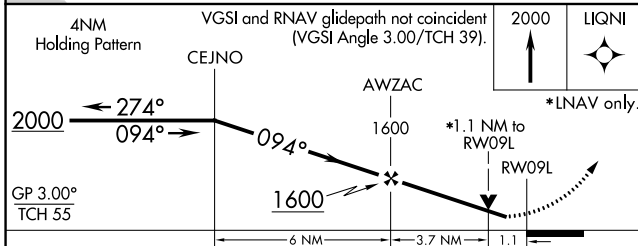
▼ For uncompensated Baro-VNAV systems, LNAV/VNAV NA below -15°C (5°F) or above 54°C (130°F). DME/DME RNP-0.3 NA. Helicopter visibility reduction below ¾ SM NA.

MISSED APPROACH: Climb to 2000 direct LIQNI and hold.

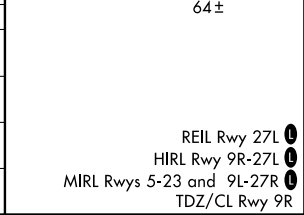
ATIS 132.55	ORLANDO APP CON 132.65 281.425	MELBOURNE TOWER * 118.2 (CTAF) 257.8	GND CON 121.9	CNLC DEL 132.65 (when twr closed)	UNICOM 122.95
-----------------------	--	---	-------------------------	--	-------------------------



ELEV 33	TDZE 33
---------	---------



CATEGORY	A	B	C	D
LPV DA	283-¾		250 (300-¾)	
LNAV/VNAV DA	467-1¾		434 (500-1¾)	
LNAV MDA	420-1 387 (400-1)		420-1½ 387 (400-1½)	
CIRCLING	500-1 467 (500-1)	520-1 487 (500-1)	520-1½ 487 (500-1½)	620-2 587 (600-2)



SE-3, 23 MAY 2019 to 20 JUN 2019

SE-3, 23 MAY 2019 to 20 JUN 2019