

WAAS CH 50101 W27A	APP CRS 274°	Rwy Idg TDZE Apt Elev	6000 32 33
--	------------------------	-----------------------------	---------------------------------------

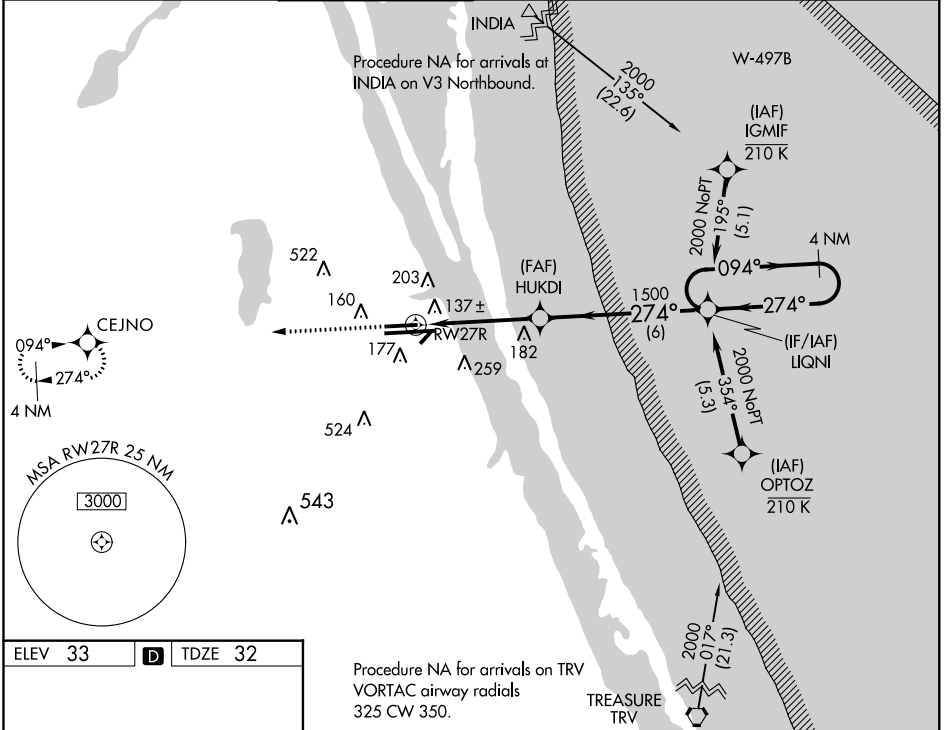
RNAV (GPS) RWY 27R

MELBOURNE INTL (MLB)

▼ For uncompensated Baro-VNAV systems, LNAV/VNAV NA below -1.5°C (5°F) or above 54°C (130°F).
DME/DME RNP-0.3 NA.

MISSED APPROACH: Climb to 2000 direct CEJNO and hold.

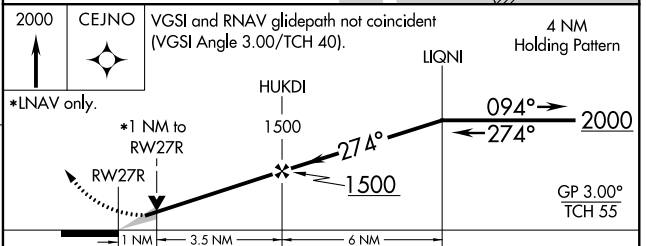
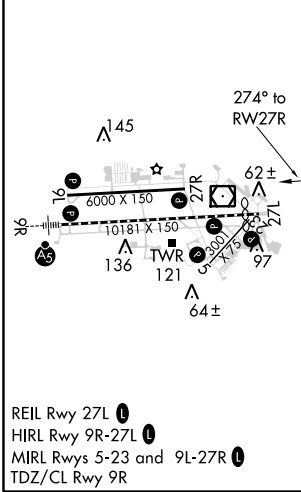
ATIS 132.55	ORLANDO APP CON 132.65 281.425	MELBOURNE TOWER ★ 118.2 (CTAF) 0 257.8	GND CON 121.9	CINC DEL 121.9 132.65 (when twr closed)	UNICOM 122.95
-----------------------	--	--	-------------------------	--	-------------------------



SE-3, 23 MAY 2019 to 20 JUN 2019

SE-3, 23 MAY 2019 to 20 JUN 2019

ELEV 33	D	TDZE 32
---------	----------	---------



CATEGORY	A	B	C	D
LPV DA		232-3/4	200 (200-3/4)	
LNAV/VNAV DA		443-1 3/8	411 (500-1 3/8)	
LNAV MDA		400-1	368 (400-1)	
CIRCLING	500-1	520-1	520-1 1/2	620-2
	467 (500-1)	487 (500-1)	487 (500-1 1/2)	587 (600-2)