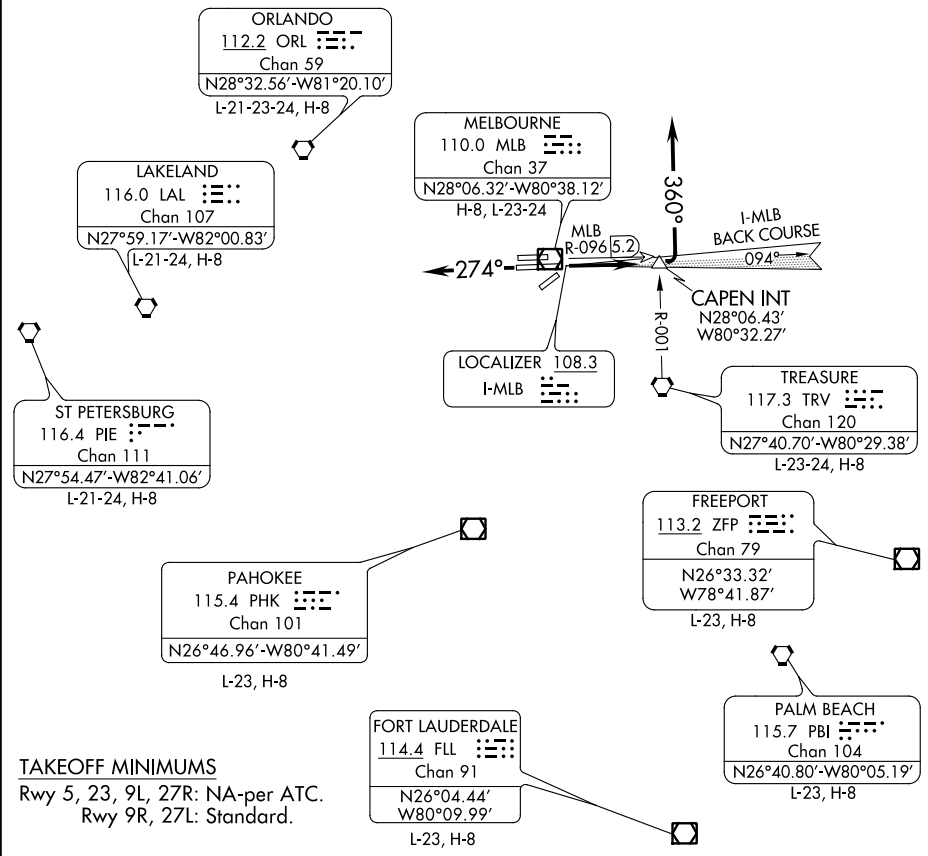


MELBOURNE SEVEN DEPARTURE

**TOP ALTITUDE:
5000**

ATIS 132.55
MELBOURNE CLNC DEL
121.9 *132.65
*(when tower closed)
ORLANDO DEP CON
132.65 281.425
CTAF 118.2



SE-3, 23 MAY 2019 to 20 JUN 2019

SE-3, 23 MAY 2019 to 20 JUN 2019

TAKEOFF MINIMUMS
Rwy 5, 23, 9L, 27R: NA-per ATC.
Rwy 9R, 27L: Standard.

NOTE: RADAR required.

NOTE: Chart not to scale.

DEPARTURE ROUTE DESCRIPTION

TAKEOFF RWY 9R: Climb on MLB VOR/DME R-096 to CAPEN INT/MLB VOR/DME 5.2 DME, then turn left heading 360°, thence. . . .

TAKEOFF RWY 27L: Climb heading 274°, thence. . . .

. . . .all aircraft expect RADAR vectors to join assigned route. Maintain 5000 or assigned altitude. Expect clearance to filed altitude/flight level 10 minutes after departure.

MELBOURNE SEVEN DEPARTURE