

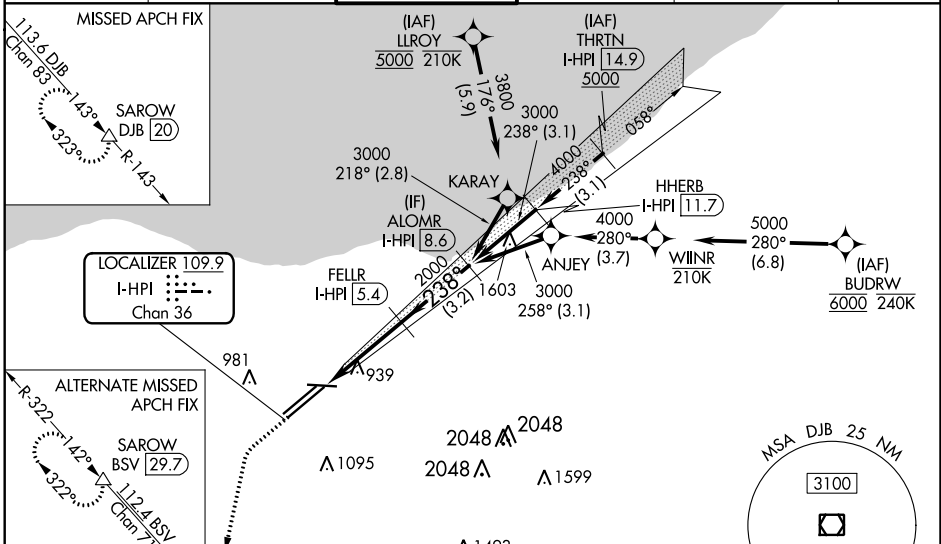
LOC/DME I-HPI 109.9 Chan 36	APP CRS 238°	Rwy Idg 9956 TDZE 786 Apt Elev 799
---	------------------------	---

ILS RWY 24L (SA CAT II)

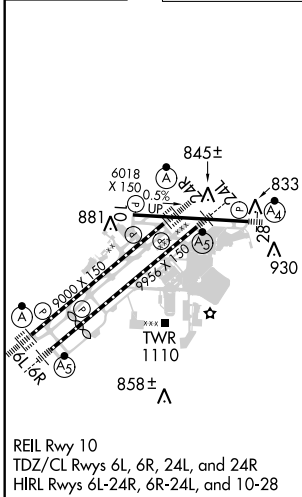
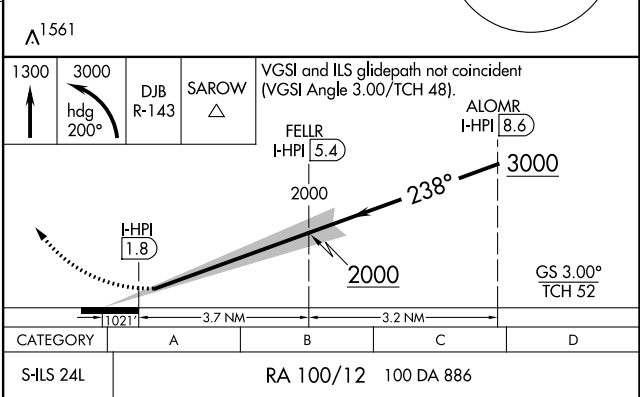
CLEVELAND-HOPKINS INTL (CLE)

RNAV 1. From LLROY and BUDRW: RNAV 1-DME/DME/IRU or GPS required for procedure entry. Aircraft not DME/DME/IRU or GPS equipped - RADAR required for procedure entry.	Rwy 24L MALSR 	MISSED APPROACH: Climb to 1300 then climbing left turn to 3000 on heading 200° and DJB VOR/DME R-143 to SAROW/DJB 20 DME and hold.
DME required. ▼ Simultaneous approach authorized. Simultaneous operations require use of vertical guidance; maintain last assigned altitude until established on glideslope. Reduced lighting: requires specific OPSPEC, MSPEC, or LOA approval and use of autoland or HUD to touchdown.		

D-ATIS ARR 127.85 DEP 132.375	CLEVELAND APP CON 124.0 354.025	CLEVELAND TOWER 124.5 273.45	GND CON 121.7 273.45	CLNC DEL 125.05 273.45	CPDLC
---	---	--	--------------------------------	----------------------------------	-------



ELEV 799	D	TDZE 24L 786
----------	----------	--------------



SA CATEGORY II ILS - SPECIAL AIRCREW & AIRCRAFT CERTIFICATION REQUIRED

EC-2, 23 MAY 2019 to 20 JUN 2019

EC-2, 23 MAY 2019 to 20 JUN 2019