

(TEERX4.TEERX) 18144

TEERX FOUR DEPARTURE (RNAV)

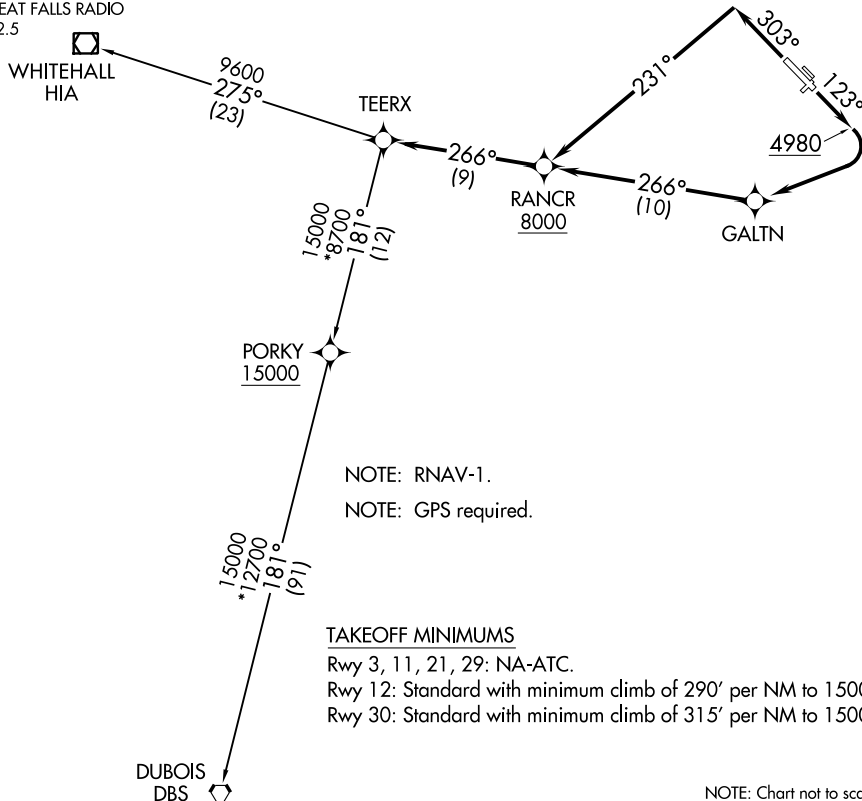
BOZEMAN YELLOWSTONE INTL (BZN)

AL-59 (FAA)

BOZEMAN, MONTANA

ATIS
 135.425
 GND CON
 121.8
 BOZEMAN TOWER*
 118.2 (CTAF)
 BIG SKY DEP CON*
 118.975 226.675
 GREAT FALLS RADIO
 122.5

**TOP ALTITUDE:
16000**



NW-1, 23 MAY 2019 to 20 JUN 2019

NW-1, 23 MAY 2019 to 20 JUN 2019

DEPARTURE ROUTE DESCRIPTION

TAKEOFF RUNWAY 12: Climb heading 123° to 4980, then climbing right turn direct GALTN, then on track 266° to cross RANCR at or above 8000, then on track 266° to TEERX, thence. . . .

TAKEOFF RUNWAY 30: Climb heading 303° to intercept course 231° to cross RANCR at or above 8000, then on track 266° to TEERX, thence. . . .

. . . .(transition). Maintain 16000, expect filed altitude 10 minutes after departure.

DUBOIS TRANSITION (TEERX4.DBS)

WHITEHALL TRANSITION (TEERX4.HIA)

TEERX FOUR DEPARTURE (RNAV)

(TEERX4.TEERX) 24MAY18

BOZEMAN, MONTANA
BOZEMAN YELLOWSTONE INTL (BZN)