

WAAS CH 72816 W12A	APP CRS 123°	Rwy Idg TDZE Apt Elev	8994 4443 4473
--	------------------------	-----------------------------	---

RNAV (GPS) Y RWY 12

BOZEMAN YELLOWSTONE INTL (BZN)

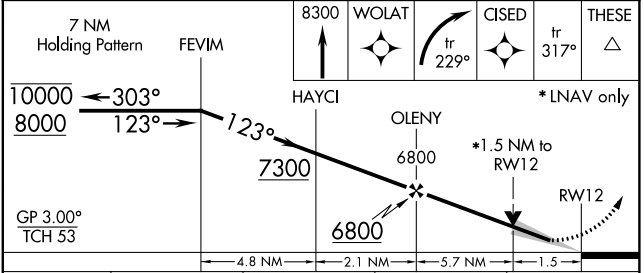
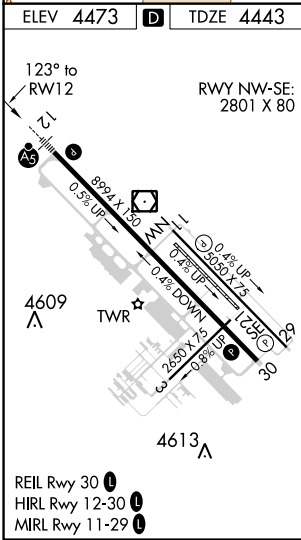
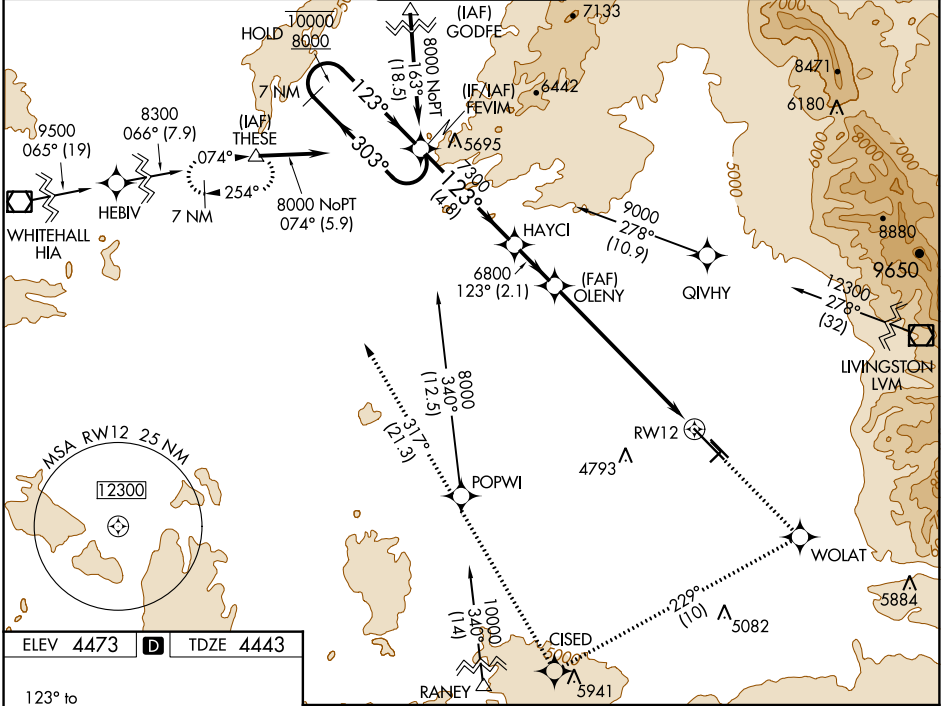
RNP APCH.

⚠ Circling NA to Rws 3-21 and 11-29. For uncompensated Baro-VNAV systems, procedure NA below -23°C or above 49°C. For inop ALS, increase **⚠** -33°C LNAV/VNAV visibility to 1½ SM and LNAV visibility Cats C and D to 1½ SM.



MISSED APPROACH: Climb to 8300 direct WOLAT and right turn on track 229° to CISED and on track 317° to THESE and hold.

ATIS 135.425	BIG SKY APP CON* 118.975 226.675	BOZEMAN TOWER* 118.2 (CTAF)	GND CON 121.8	UNICOM 122.95
------------------------	--	---------------------------------------	-------------------------	-------------------------



CATEGORY	A	B	C	D
LPV DA		4693-½	250 (300-½)	
LNAV/VNAV DA		5094-1¾	651 (700-1¾)	
LNAV MDA	4960-½	517 (500-½)	4960-1	4960-1¼ 517 (500-1¼)
C CIRCLING	4960-1	487 (500-1)	5160-2 687 (700-2)	5360-3 887 (900-3)

NW-1, 23 MAY 2019 to 20 JUN 2019

NW-1, 23 MAY 2019 to 20 JUN 2019