

APP CRS	Rwy Idg	<b>8994</b>
<b>123°</b>	TDZE	<b>4443</b>
	Apt Elev	<b>4473</b>

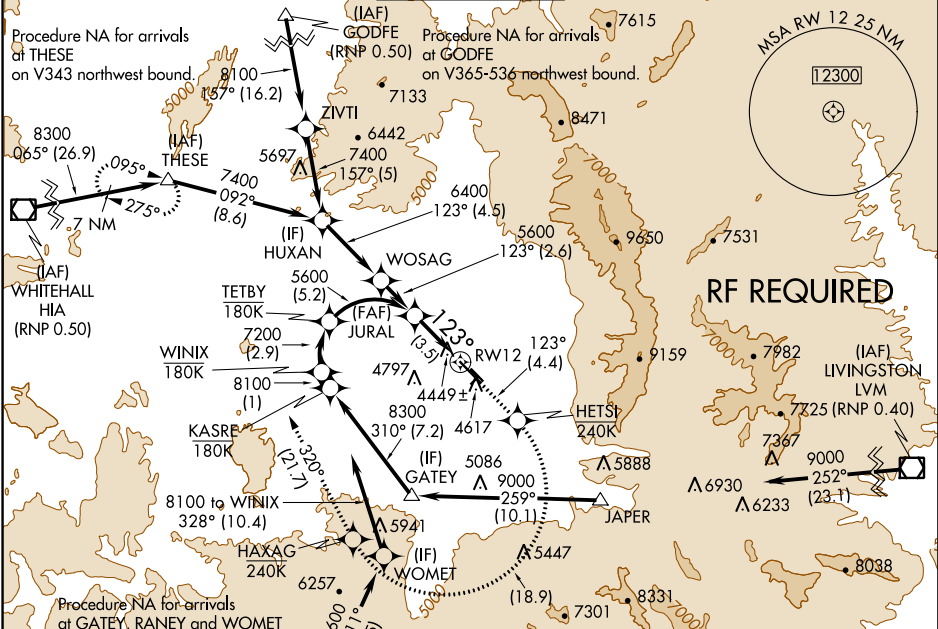
# RNAV (RNP) Z RWY 12

BOZEMAN YELLOWSTONE INTL (BZN)

**GPS required.** For uncompensated Baro-VNAV systems, procedure NA below -23°C (-11°F) or above 49°C (121°F). When VGSi inop, procedure NA at night. For inoperative MALSR increase RNP 0.30 visibility to 1/2 all Cats.

**MALS**  
MISSED APPROACH: Climb to 8300 on track 123° to HETSI, and right turn to HAXAG, and on track 320° to THESE and hold.

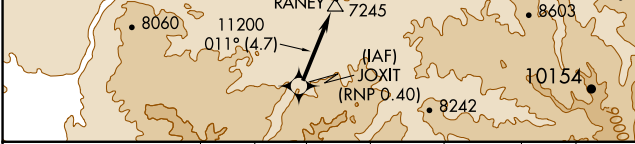
ATIS <b>135.425</b>	BIG SKY APP CON ★ <b>118.975 226.675</b>	BOZEMAN TOWER ★ <b>118.2 (CTAF)</b>	GND CON <b>121.8</b>	UNICOM <b>122.95</b>
------------------------	---	--	-------------------------	-------------------------



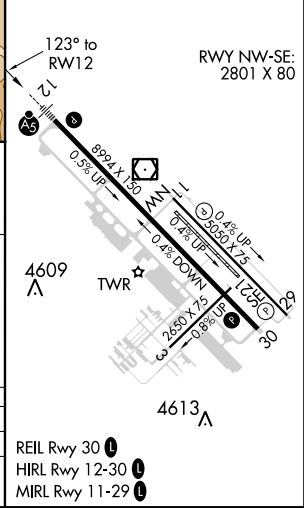
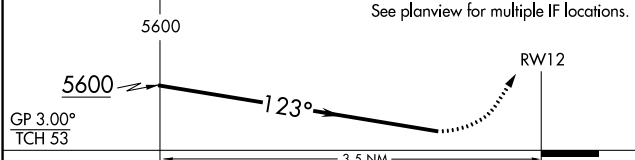
NW-1, 23 MAY 2019 to 20 JUN 2019

NW-1, 23 MAY 2019 to 20 JUN 2019

ELEV	4473	TDZE	4443
------	------	------	------



JURAL	8300	HETSI	HAXAG	THESE
	↑	tr 123°	↪	tr 320°



CATEGORY	A	B	C	D
RNP 0.30 DA		4791-1	348(400-1)	

**AUTHORIZATION REQUIRED**