

ILS or LOC RWY 12

BOZEMAN YELLOWSTONE INTL (BZN)

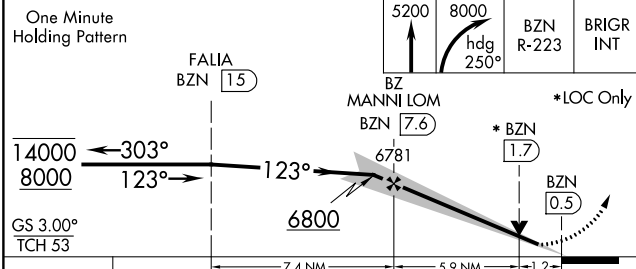
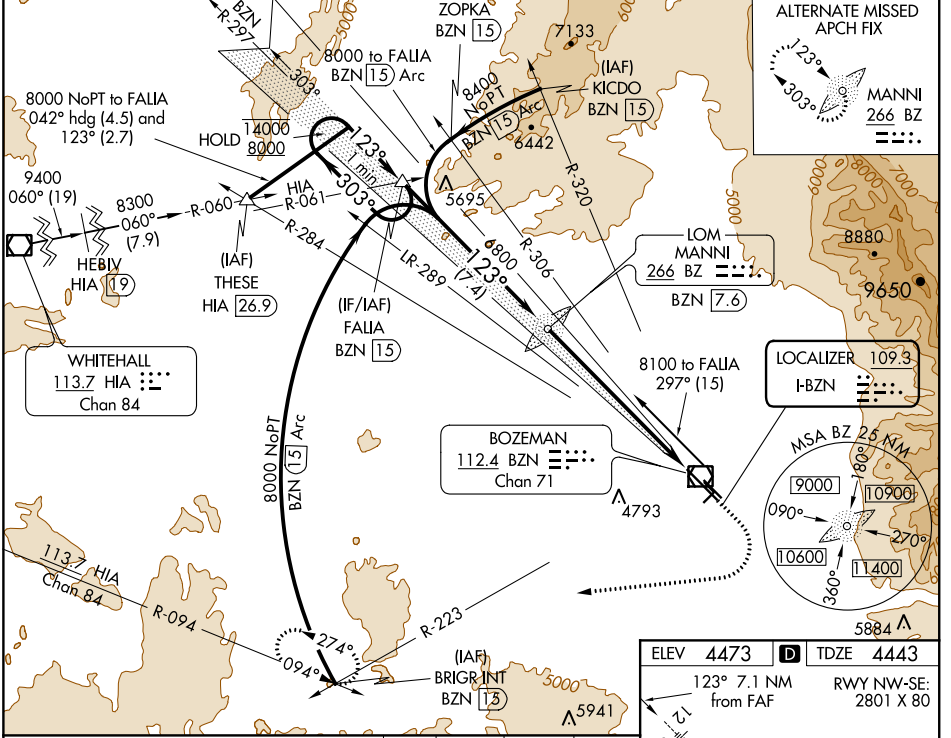
LOC I-BZN 109.3	APP CRS 123°	Rwy Idg 8994	TDZE 4443
		Apt Elev 4473	

RADAR required for procedure entry at BRIGR.

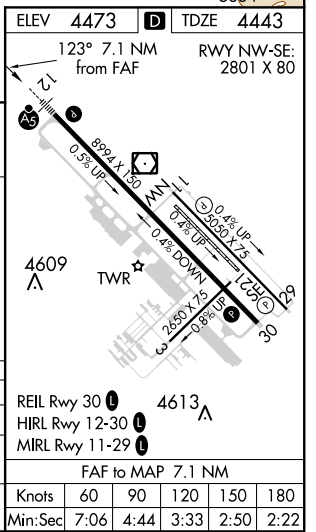
MALSRL

MISSED APPROACH: Climb to 5200 then climbing right turn to 8000 on heading 250° and on BZN VOR/DME R-223 to BRIGR INT/BZN 15 DME and hold.

ATIS 135.425	BIG SKY APP CON* 118.975 226.675	BOZEMAN TOWER* 118.2 (CTAF) 0	GND CON 121.8	UNICOM 122.95
------------------------	--	---	-------------------------	-------------------------



CATEGORY	A	B	C	D
S-ILS 12		4643-1/2	200 (200-1/2)	
S-LOC 12	4860-1/2	417 (400-1/2)	4860-3/4	417 (400-3/4)
CIRCLING	4940-1	467 (500-1)	5160-2 687 (700-2)	5360-3 887 (900-3)



NW-1, 23 MAY 2019 to 20 JUN 2019

NW-1, 23 MAY 2019 to 20 JUN 2019