

BOBK FOUR DEPARTURE (RNAV)

NW-1, 23 MAY 2019 to 20 JUN 2019

TOP ALTITUDE:
16000

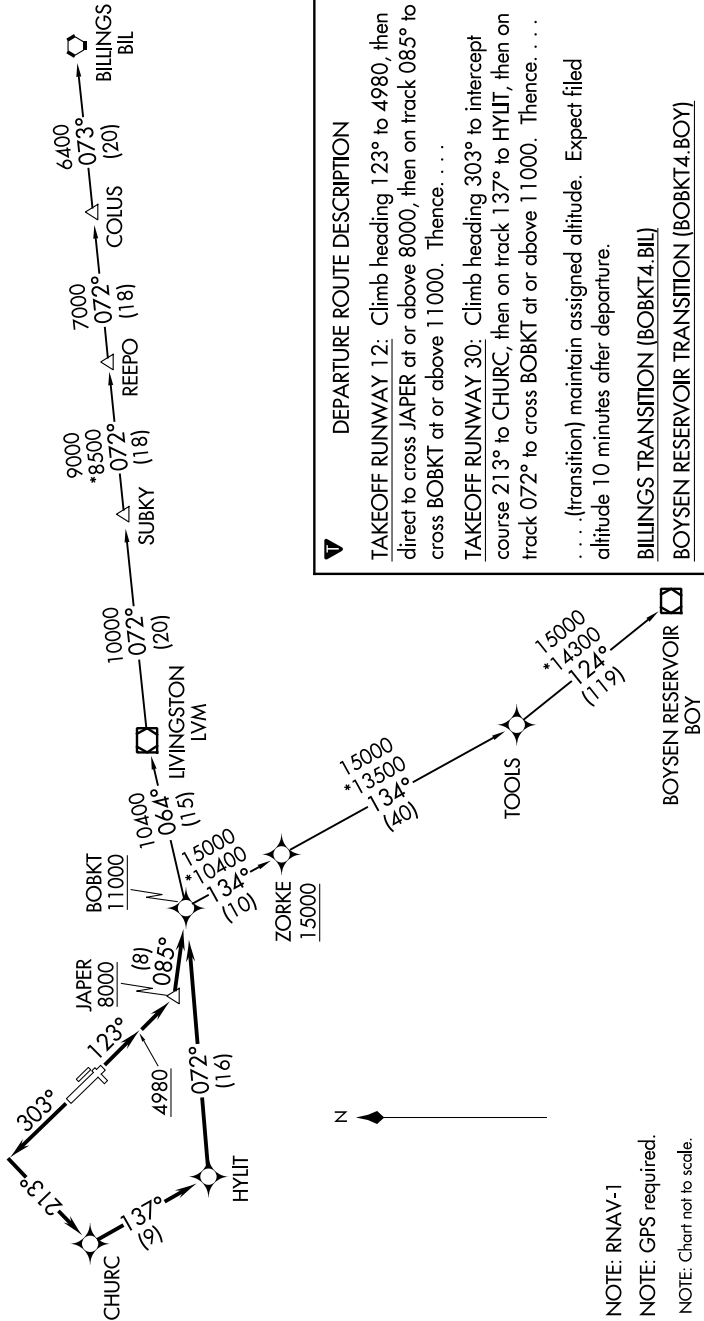
TAKEOFF MINIMUMS

Rvys 3, 11, 21, 29: NA - ATC.

Rvy 12: Standard with minimum climb of 395' per NM to 15000.

Rvy 30: Standard with minimum climb of 250' per NM to 15000.

ATIS
135.425
GND CON
121.8
BOZEMAN TOWER*
118.2 (CTAF)
BIG SKY DEP CON*
118.975 226.675
GREAT FALLS RADIO
122.5



DEPARTURE ROUTE DESCRIPTION

TAKEOFF RUNWAY 12: Climb heading 123° to 4980, then direct to cross JAPER at or above 8000, then on track 085° to cross BOBK at or above 11000. Thence. . . .

TAKEOFF RUNWAY 30: Climb heading 303° to intercept course 213° to CHURC, then on track 137° to HYLIT, then on track 072° to cross BOBK at or above 11000. Thence. . . .

. . . (transition) maintain assigned altitude. Expect filed altitude 10 minutes after departure.

BILLINGS TRANSITION (BOBK4.BIL)

BOYSEN RESERVOIR TRANSITION (BOBK4.BOY)

NOTE: RNAV-1
NOTE: GPS required.
NOTE: Chart not to scale.

BOBK FOUR DEPARTURE (RNAV)

NW-1, 23 MAY 2019 to 20 JUN 2019