

APP CRS 177°	Rwy Idg TDZE Apt Elev	N/A N/A 1046
------------------------	-----------------------------	---

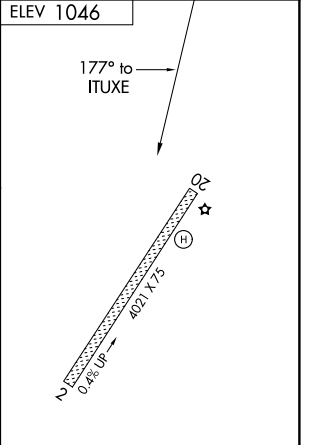
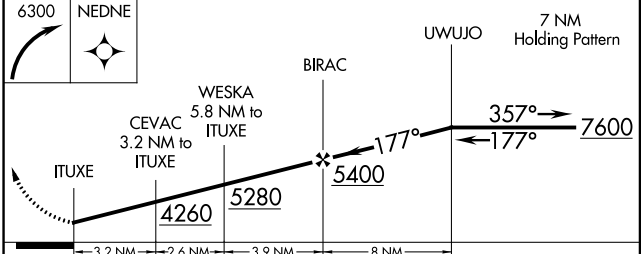
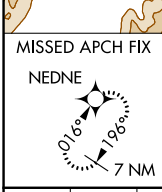
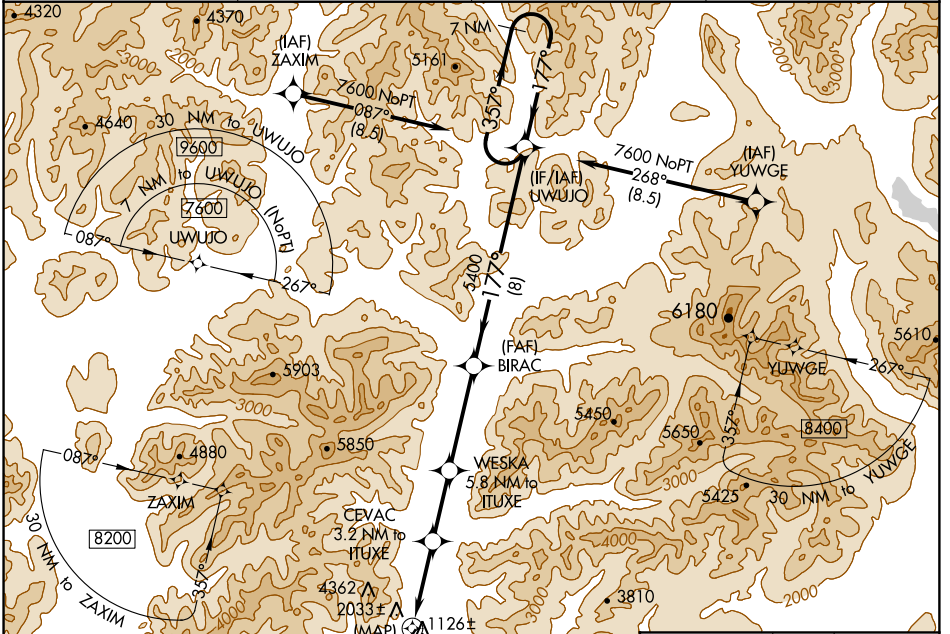
RNAV (GPS)-A

COLDFOOT (CXF) (PACX)

NA DME/DME RNP-0.3 NA. Use Bettles altimeter setting, when not received, procedure NA. Rwy 20 helicopter visibility reduction below 1 SM NA. Circling Rwy 20 NA at night. Circling NA for Cats B and C west of Rwy 2-20.

MISSED APPROACH: Climbing right turn to 6300 direct NEDNE and hold.

BETTLES ASOS 135.45	ANCHORAGE CENTER 124.6 352.0	FAIRBANK RADIO 122.0	CTAF 122.90
--------------------------------------	---	---------------------------------------	------------------------------



CATEGORY	A	B	C	D
CIRCLING	3460-1¼ 2414 (2500-1¼)	3460-1½ 2414 (2500-1½)	4260-3 3214 (3300-3)	NA

MIRL Rwy 2-20

AK, 25 APR 2019 to 20 JUN 2019

AK, 25 APR 2019 to 20 JUN 2019