

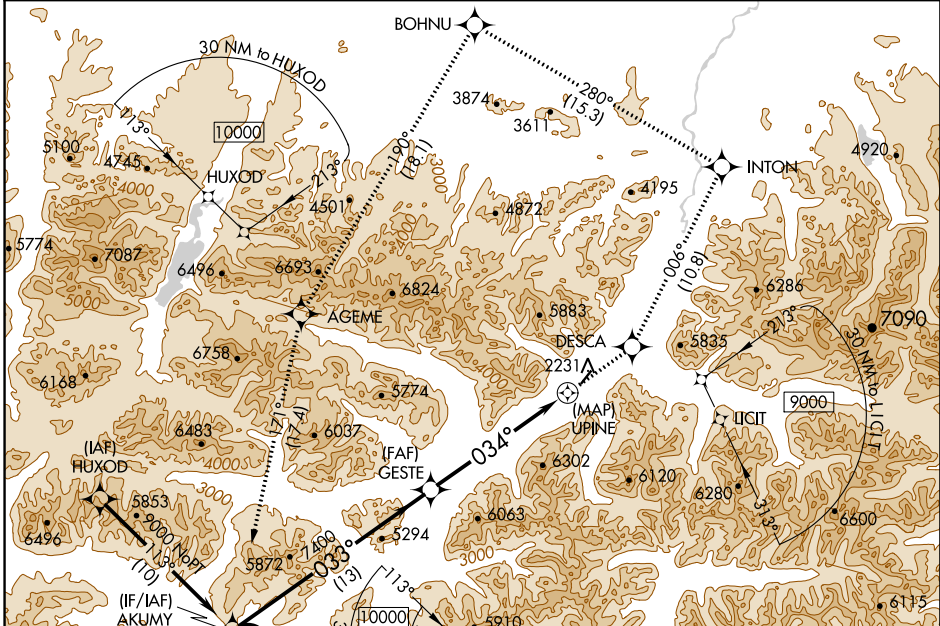
APP CRS 034°	Rwy Idg TDZE Apt Elev 2106	N/A N/A N/A
------------------------	--	-------------------

RNAV (GPS)-A

ANAKTUVUK PASS (AKP) (PAKP)

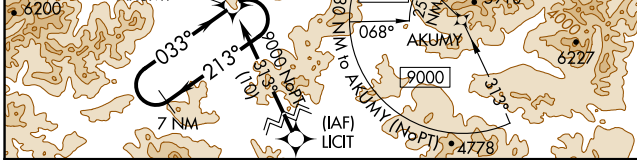
<p>▼ When local altimeter setting not received, procedure NA. Circling NA northwest of Rwy 2-20. DME/DME RNP-0.3 NA.</p>	<p>MISSED APPROACH: Climb to 9000 direct DESCA and on track 006° to INTON and on track 280° BOHNU and on track 190° to AGEME and on track 171° to AKUMY and hold.</p>
---	--

AWOS-3P 135.75	ANCHORAGE CENTER 124.6 352.0	FAIRBANKS RADIO 122.15	UNICOM 122.8 (CTAF) ①
--------------------------	--	----------------------------------	---------------------------------

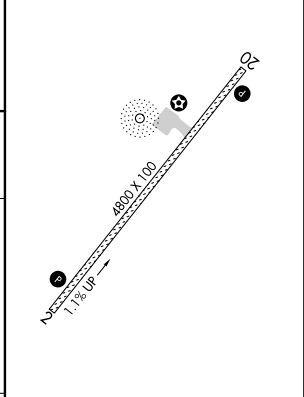


AK, 25 APR 2019 to 20 JUN 2019

AK, 25 APR 2019 to 20 JUN 2019



ELEV 2106



9000	DESCA	↑	INTON	tr 006°	BOHNU	tr 280°	AGEME	tr 190°	AKUMY
7 NM Holding Pattern AKUMY									
9000	← 213°	033° →	033°	GESTE	7400	034°	UPINE		
			13 NM		9 NM		0.4		

CATEGORY	A		B		C		D	
CIRCLING	6100-1¼ 3994 (4000-1¼)		6100-1½ 3994 (4000-1½)		6100-3		3994 (4000-3)	

MIRL Rwy 2-20 ①
REIL Rws 2 and 20 ①