

(AKUMY3.AKUMY) 17173

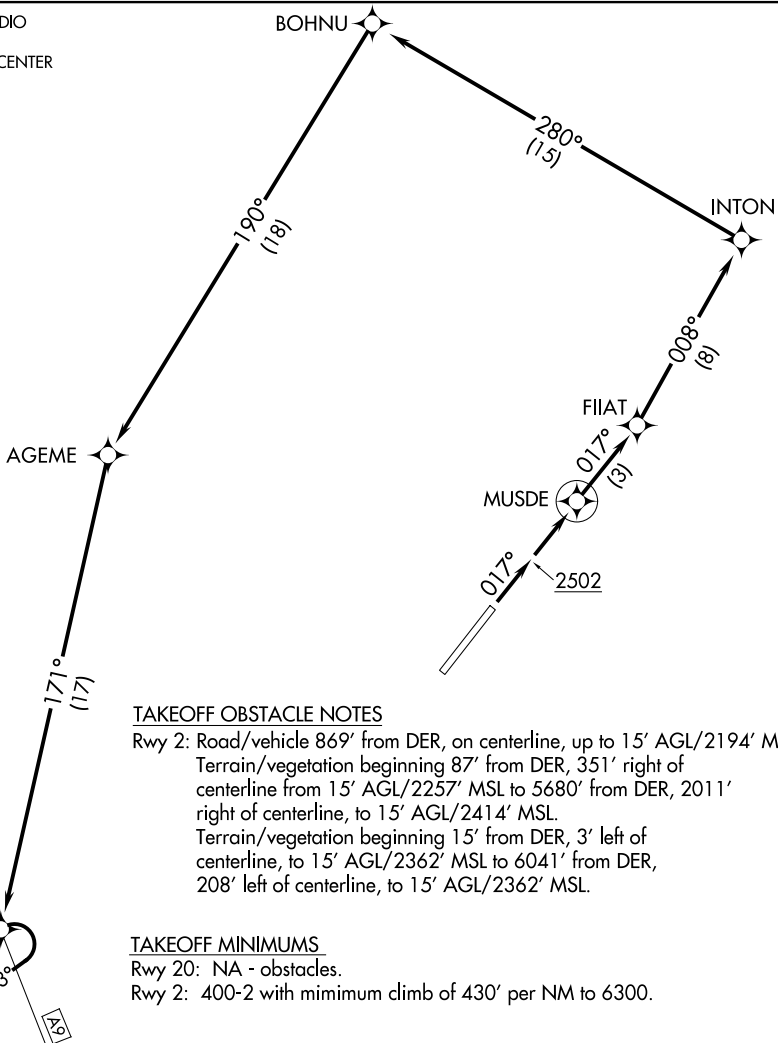
AL-9380 (FAA)

ANAKTUVUK PASS (AKP) (PAKP)

# AKUMY THREE DEPARTURE (OBSTACLE) (RNAV)

ANAKTUVUK PASS, ALASKA

FAIRBANKS RADIO  
122.15  
ANCHORAGE CENTER  
124.6 352.0



### TAKEOFF OBSTACLE NOTES

Rwy 2: Road/vehicle 869' from DER, on centerline, up to 15' AGL/2194' MSL.  
 Terrain/vegetation beginning 87' from DER, 351' right of centerline from 15' AGL/2257' MSL to 5680' from DER, 2011' right of centerline, to 15' AGL/2414' MSL.  
 Terrain/vegetation beginning 15' from DER, 3' left of centerline, to 15' AGL/2362' MSL to 6041' from DER, 208' left of centerline, to 15' AGL/2362' MSL.

### TAKEOFF MINIMUMS

Rwy 20: NA - obstacles.  
 Rwy 2: 400-2 with minimum climb of 430' per NM to 6300.

NOTE: RNAV-1

NOTE: GPS required.

NOTE: Chart not to scale.

### DEPARTURE ROUTE DESCRIPTION

TAKEOFF RUNWAY 2: Climb heading 017° to 2502, then direct to MUSDE, then on depicted route to AKUMY, maintain 9000 or higher as assigned.

AKUMY THREE DEPARTURE (OBSTACLE) (RNAV)

ANAKTUVUK PASS, ALASKA

ANAKTUVUK PASS (AKP) (PAKP)

(AKUMY3.AKUMY) 07MAR13

AK, 25 APR 2019 to 20 JUN 2019

AK, 25 APR 2019 to 20 JUN 2019