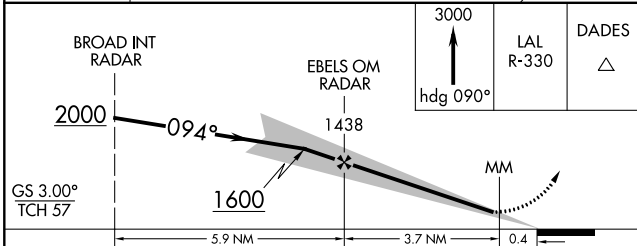
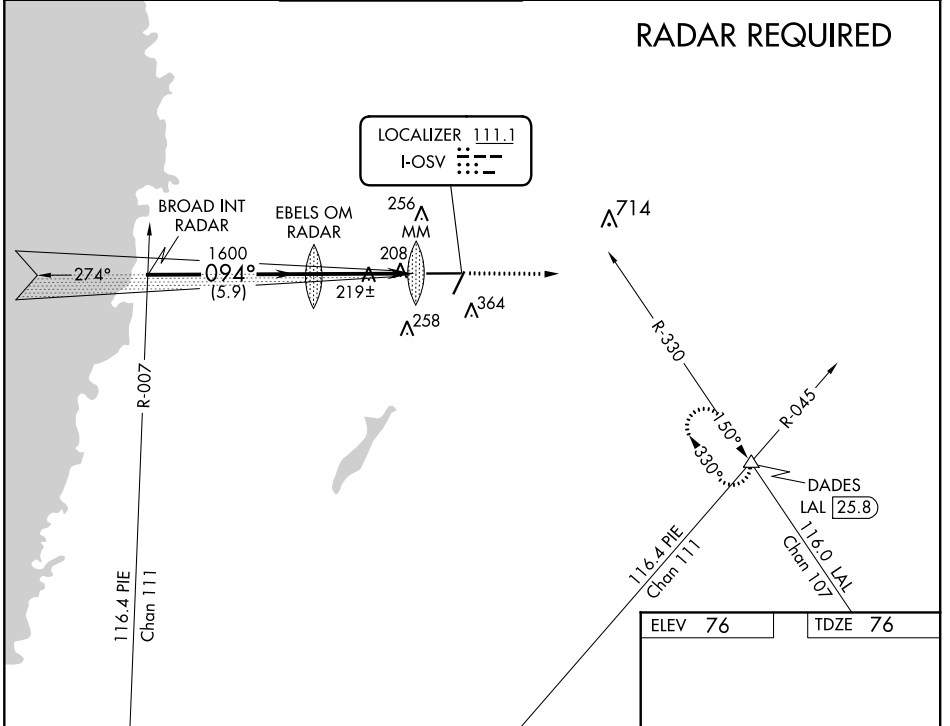


LOC I-OSV <b>111.1</b>	APP CRS <b>094°</b>	Rwy Idg TDZE Apt Elev	<b>7001</b> <b>76</b> <b>76</b>
---------------------------	------------------------	-----------------------------	---------------------------------------

**ILS or LOC RWY 9**  
BROOKSVILLE-TAMPA BAY RGNL (BKV)

<p>▼ DME required. When local altimeter setting not received use Tampa Intl altimeter setting and increase all DA to 353 and all MDA 80 feet, increase S-LOC 9 Cat D and Circling Cat C/D visibility ¼ mile. For inop MALSR when using Tampa Intl increase S-ILS 9 all Cats visibility to 1 mile. Circling to Rwy 3/21/27 NA at night.</p>	<p>MALSR</p>	<p>MISSED APPROACH: Climb to 3000 on heading 090° and LAL R-330 to DADES/LAL 25.8 DME and hold.</p>
	<p>▲ NA</p>	

ASOS <b>134.725</b>	TAMPA APP CON <b>125.3 316.05</b>	BROOKSVILLE TOWER ★ <b>118.55 (CTAF) 0</b>	GND CON <b>121.4</b>	CLNC DEL <b>119.125</b>	UNICOM <b>123.0</b>
------------------------	--------------------------------------	---	-------------------------	----------------------------	------------------------



ELEV 76	TDZE 76
MIRL Rwys 3-21 and 9-27	
FAF to MAP 4.1 NM	
Knots	60 90 120 150 180
Min:Sec	4:06 2:44 2:03 1:38 1:22

CATEGORY	A	B	C	D
S-ILS 9	276-½		200 (200-½)	
S-LOC 9	480-½	404 (500-½)	480-¾	404 (500-¾)
CIRCLING	680-1	604 (700-1)	680-1¾ 604 (700-1¾)	680-2 604 (700-2)

SE-3, 25 APR 2019 to 23 MAY 2019

SE-3, 25 APR 2019 to 23 MAY 2019