

| | | | |
|--|------------------------|---|-------------|
| WAAS CH 86706 W23A | APP CRS 231° | Rwy Idg TDZE 191 Apt Elev 193 | 5002 |
|--|------------------------|---|-------------|

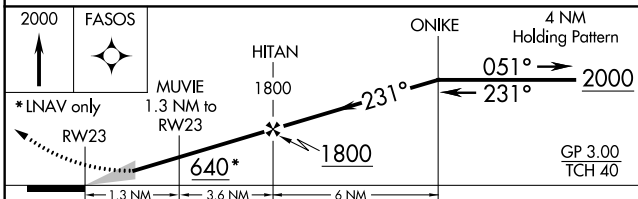
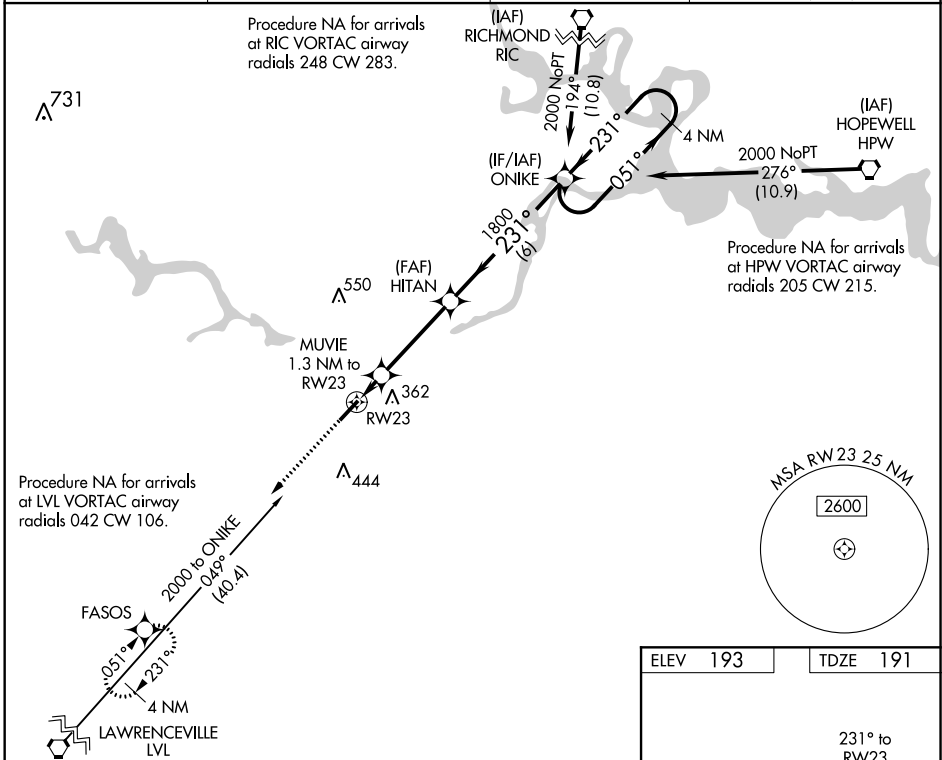
RNAV (GPS) RWY 23

DINWIDDIE COUNTY (PTB)

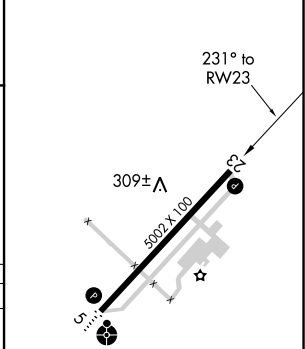
⚠ Baro-VNAV NA when using Richmond Executive-Chesterfield County altimeter setting. For uncompensated Baro-VNAV systems, LNAV/VNAV NA below -15°C (5°F) or above 54°C (130°F). DME/DME RNP-0.3 NA. When local altimeter setting not received, use Richmond Executive-Chesterfield County altimeter setting: increase LPV DA to 478 feet and LNAV/VNAV DA to 517 feet and all MDA 40 feet; increase LNAV/VNAV all Cats visibility and LNAV Cat C visibility 1/8 mile, and increase Circling Cat C visibility 1/4 mile.

MISSED APPROACH:
Climb to 2000 direct FASOS and hold.

| | | | |
|--------------------------|--|-----------------------|---------------------------------|
| AWOS-3 133.325 | POTOMAC APP CON 126.75 307.2 | GCO 135.075 | UNICOM 122.7 (CTAF) 0 |
|--------------------------|--|-----------------------|---------------------------------|



| | |
|----------|----------|
| ELEV 193 | TDZE 191 |
|----------|----------|



| CATEGORY | A | B | C | D |
|-------------------|-------|-------------|------------------------|----|
| LPV DA | 441-1 | 250 (300-1) | | NA |
| LNAV/VNAV DA | 480-1 | 289 (300-1) | | NA |
| LNAV MDA | 560-1 | 369 (400-1) | | NA |
| C CIRCLING | 680-1 | 487 (500-1) | 760-1½ 567 (600-1½) | NA |

MIRL Rwy 5-23 **0**
REIL Rws 5 and 23 **0**

NE-3, 25 APR 2019 to 23 MAY 2019

NE-3, 25 APR 2019 to 23 MAY 2019