

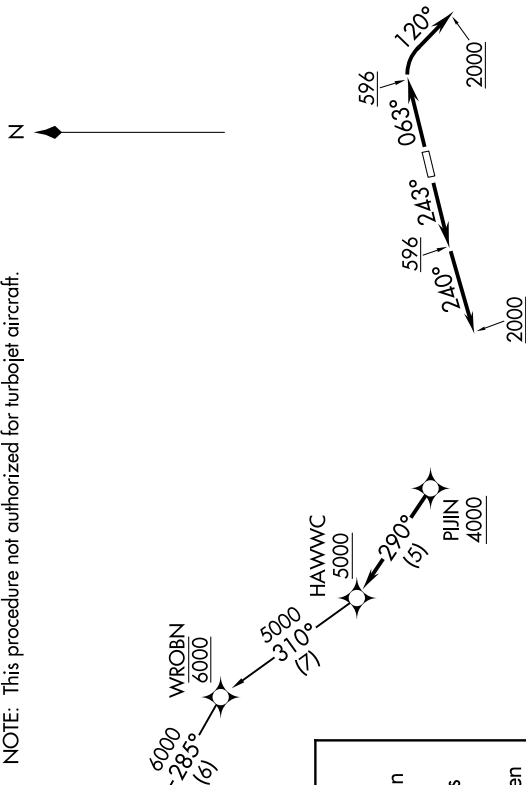
SW-3: 25 APR 2019 to 23 MAY 2019

**TOP ALTITUDE:**  
6000

ATIS  
125.05  
GND CON  
121.8  
SOCAL DEP CON  
125.35 316.125



NOTE: RADAR required.  
NOTE: RNAV 1.  
NOTE: DME/DME/IRU or GPS required.  
NOTE: This procedure not authorized for turbojet aircraft.



**DEPARTURE ROUTE DESCRIPTION**

**TAKEOFF RUNWAY 6:** Climb heading 063° to 596, then right turn on heading 120° to 2000 for vectors to PUJIN, cross PUJIN at or above 4000, then on track 290° to cross HAWWC at or above 5000, thence . . . .

**TAKEOFF RUNWAY 24:** Climb heading 243° to 596, then on heading 240° to 2000 for vectors to PUJIN, cross PUJIN at or above 4000, then on track 290° to cross HAWWC at or above 5000, thence . . . .

. . . . on (transition). Maintain 6000. Expect higher altitude 10 minutes after departure.

**IKAYE TRANSITION (HAWWC3.IKAYE)**

**TAKEOFF MINIMUMS**  
Rwy 6: Standard with minimum climb of 280 feet per NM to 600.  
Rwy 24: Standard.

NOTE: Chart not to scale.

SW-3: 25 APR 2019 to 23 MAY 2019