

(WETS11.WETS1) 17341

WETS1 ONE DEPARTURE

AL-1241 (FAA)

COLD BAY (CDB) (PACD)

COLD BAY, ALASKA

**TOP ALTITUDE:
ASSIGNED BY ATC**

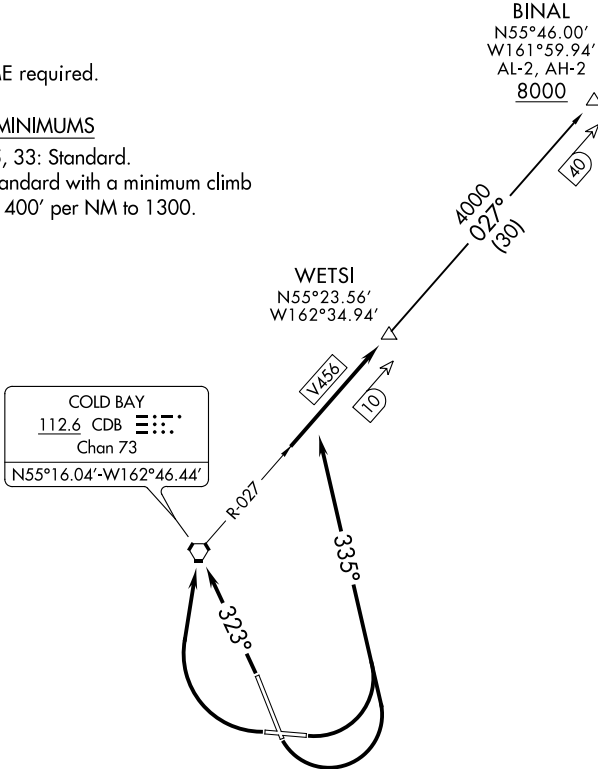
ANCHORAGE CENTER
118.5 278.3
COLD BAY RADIO
121.5

NOTE: DME required.

TAKEOFF MINIMUMS

Rwys 8, 15, 33: Standard.

Rwy 26: Standard with a minimum climb
of 400' per NM to 1300.



COLD BAY
112.6 CDB
Chan 73
N55°16.04'-W162°46.44'

NOTE: Chart not to scale.



DEPARTURE ROUTE DESCRIPTION

TAKEOFF RUNWAYS 8, 15: Climbing left turn heading 335°, thence

TAKEOFF RUNWAY 26: Climbing right turn direct CDB VORTAC, thence

TAKEOFF RUNWAY 33: Climb heading 323° direct CDB VORTAC, thence

. . . . intercept CDB VORTAC R-027 to join V456 northeast bound to WETS1
maintain assigned altitude.

BINAL TRANSITION (WETS11.BINAL): From over WETS1 on CDB R-027 to BINAL.

WETS1 ONE DEPARTURE

(WETS11.WETS1) 07DEC17

COLD BAY, ALASKA
COLD BAY (CDB) (PACD)

AK, 25 APR 2019 to 20 JUN 2019

AK, 25 APR 2019 to 20 JUN 2019