

WAAS CH 49106 W33A	APP CRS 326°	Rwy Idg 10179 TDZE 94 Apt Elev 102
--	------------------------	---

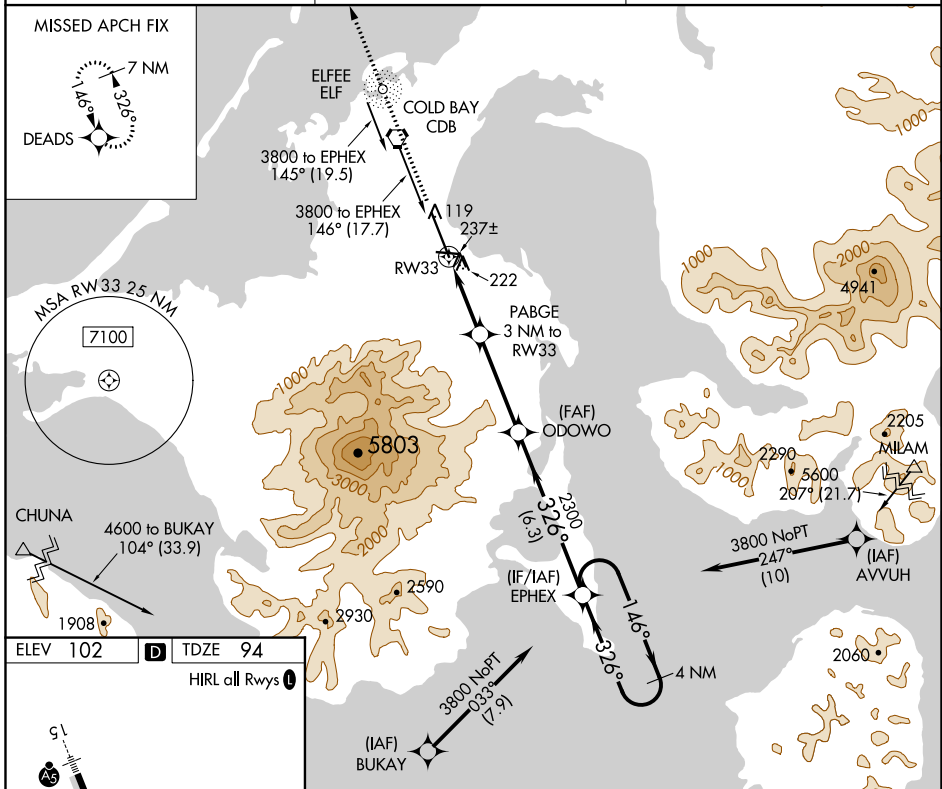
RNAV (GPS) RWY 33

COLD BAY (CDB) (PACD)

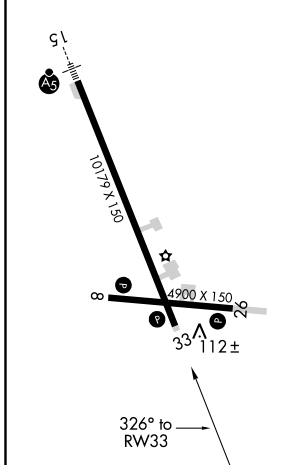
T For uncompensated Baro-VNAV systems, LNAV/VNAV NA below -18°C (0°F) or above 54°C (130°F). DME/DME RNP-0.3 NA. Circling NA for Cat A and B southwest of Rwy 15-33 at night. Circling NA for Cat C and D southwest of Rwy 15-33.

MISSED APPROACH: Climb to 3000 direct DEADS and hold.

ASOS 135.75	ANCHORAGE CENTER 118.5 278.3	COLD BAY RADIO★ 123.6 (CTAF) 0
-----------------------	--	---



ELEV 102	D	TDZE 94
HIRL all Rwys 1		



3000	DEADS	VGSI and RNAV glidepath not coincident (VGSI Angle 3.00/TCH 36).	4 NM Holding Pattern
		PABGE 3 NM to RW33	EPHEX
		*1.2 NM to RW33	ODOWO 2300
		1100*	2300
		1.2 NM	1.8 NM
		3.8 NM	6.3 NM
			326°
			146°
			3800
			*LNAV only
			GP 3.00° TCH 55

CATEGORY	A	B	C	D
LPV DA		294-1	200 (200-1)	
LNAV/VNAV DA		408-1	314 (400-1)	
LNAV MDA	500-1	406 (400-1)	500-1½	406 (400-1½)
CIRCLING	540-1 438 (500-1)	560-1 458 (500-1)	560-1½ 458 (500-1½)	660-2 558 (600-2)

AK, 25 APR 2019 to 20 JUN 2019

AK, 25 APR 2019 to 20 JUN 2019