



ILS or LOC/DME RWY 15

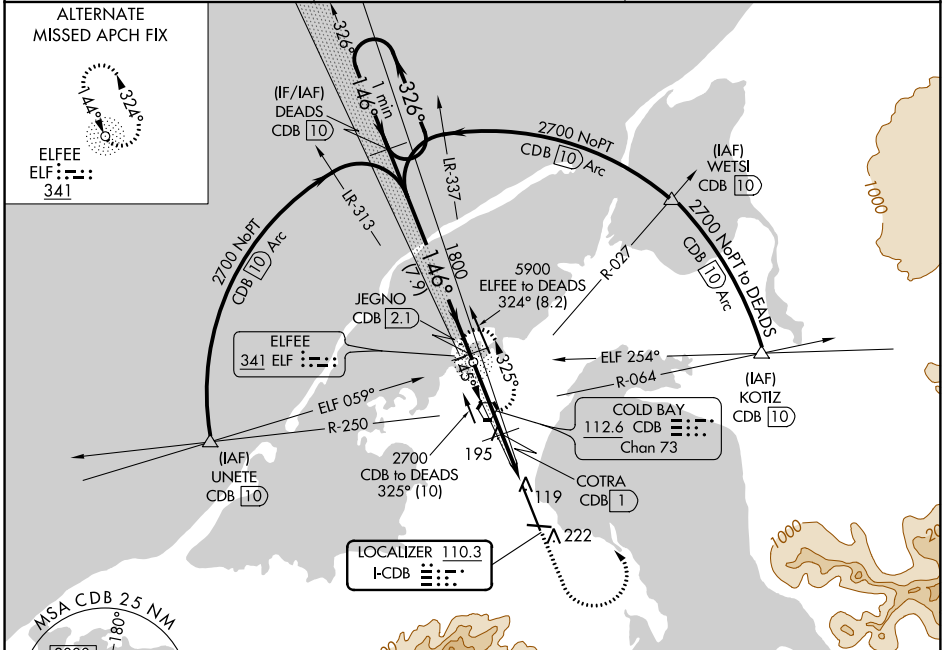
COLD BAY (CDB) (PACD)

LOC I-CDB 110.3	APP CRS 146°	Rwy Idg 10179 TDZE 75 Apt Elev 102
---------------------------	------------------------	---


▼ DME from CDB VORTAC. Simultaneous reception of I-CDB and CDB DME required. Circling NA for Cat A and B southwest Rwy 15-33 at night. Circling NA for Cat C and D southwest Rwy 15-33. DME values will decrease then increase prior to reaching the missed approach point. # RVR 1800 authorized with use of FD or AP or HUD to DA.

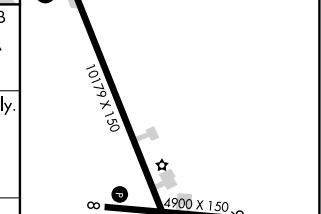
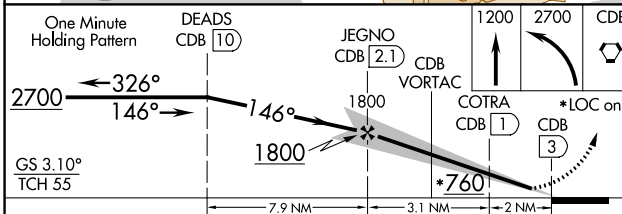
MALSR

MISSED APPROACH: Climb to 1200 then climbing left turn to 2700 direct CDB VORTAC and hold, continue climb-in-hold to 2700.

ASOS 135.75	ANCHORAGE CENTER 118.5 278.3	COLD BAY RADIO ★ 123.6 (CTAF) 
-----------------------	--	---



LOCALIZER 110.3 I-CDB 	COLD BAY 112.6 CDB Chan 73 
--	---

ELEV 102 	TDZE 75
---	---------



One Minute Holding Pattern	DEADS CDB 10	JEGNO CDB 2.1	1200	2700	CDB
2700 ← 326°	146° →	1800	COTRA CDB 1	*LOC only.	CDB 3
GS 3.10°					
TCH 55					
		7.9 NM	3.1 NM	2 NM	

CATEGORY	A	B	C	D
S-ILS 15 #	275/24 200 (200-½)			
S-LOC 15	500/24	425 (400-½)	500/40	425 (400-¾)
CIRCLING	540-1 438 (500-1)	560-1 458 (500-1)	560-1½ 458 (500-1½)	660-2 558 (600-2)

HIRL all Rwys 

AK, 25 APR 2019 to 20 JUN 2019

AK, 25 APR 2019 to 20 JUN 2019