

COLD BAY, ALASKA

HI-VOR/DME or TACAN RWY 15

VORTAC CDB 112.6 Chan 73	APCH CRS 141°	Rwy ldg 10,179 THRE 73 Arpt Elev 100
--	-------------------------	---

JAL-1241 [USAF]

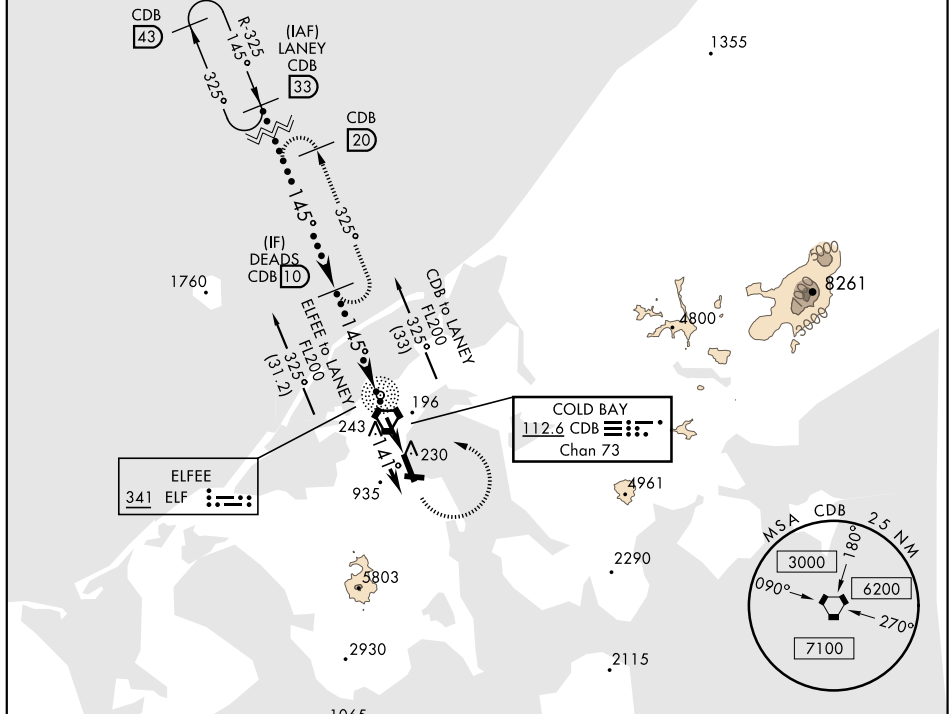
COLD BAY (CDB) (PACD)

▼ * When ALS inop, increase vis to 1½ miles.
 ** Circling not authorized SW of Rwy 15-33.



MISSED APPROACH: Climb to 1200, then climbing left turn to 3000 direct CDB VORTAC, then on CDB R-325 to DEADS/CDB 10 DME and hold.

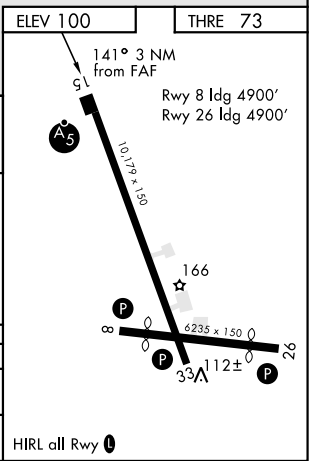
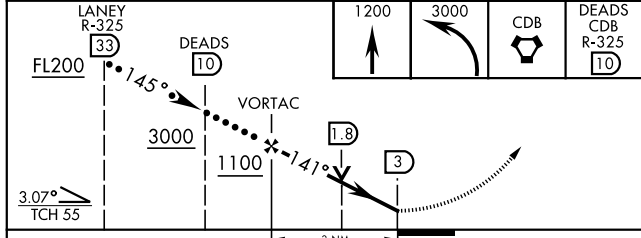
ANCHORAGE CENTER 118.5 278.3	COLD BAY RADIO 123.6 (CTAF) 0	ASOS 135.75
--	---	-----------------------



AK, 25 APR 2019 to 20 JUN 2019

AK, 25 APR 2019 to 20 JUN 2019

EMERG SAFE ALT 100 NM 11,700



CATEGORY	C	D	E
S-15 *	520/45	447	(500-7%)
CIRCLING **	560-1½ 458 (500-1½)	660-2 558 (600-2)	820-2½ 718 (800-2½)

COLD BAY, ALASKA
Amdt 4 15NOV12

55°12'N-162°44'W

COLD BAY (CDB) (PACD)

HI-VOR/DME or TACAN RWY 15