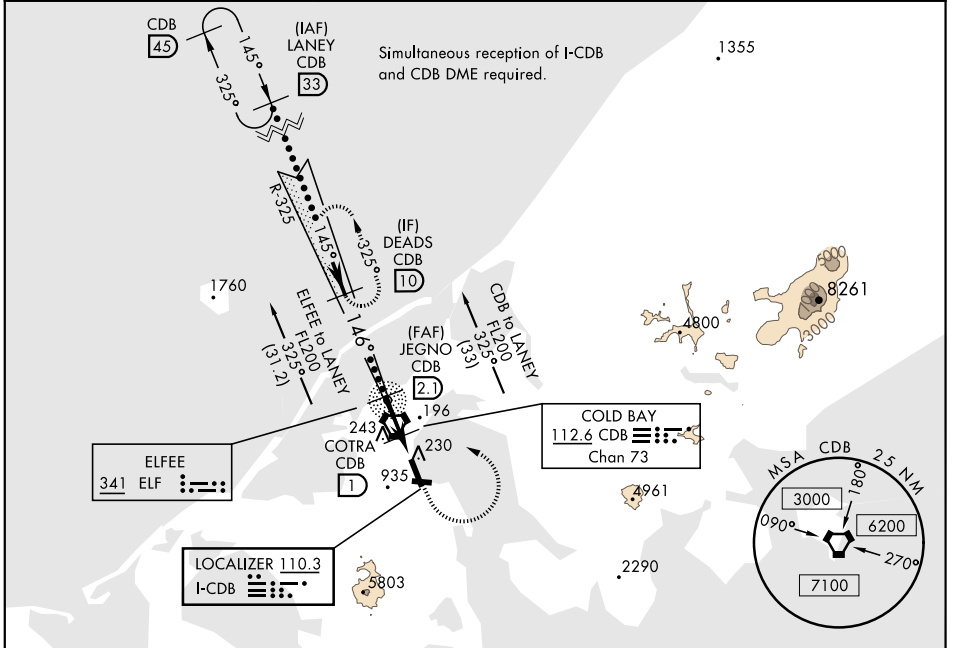


HI-ILS or LOC/DME RWY 15

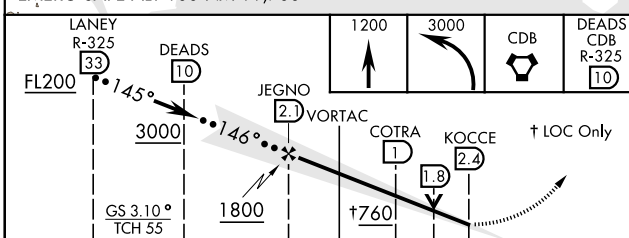
| | | | | |
|---|-------------------------|---|---------------------|--|
| LOC I-CDB 110.3 | APCH CRS 146° | Rwy ldg 10,179 THRE 73 Arpt Elev 100 | JAL-1241 [USAF] | COLD BAY (CDB) (PACD) |
| ▼ * When ALS inop, increase vis to 1½ miles. ** When ALS inop, increase vis to 1¾ miles. *** Circling not authorized SW of Rwy 15-33. | | | MALSRL A5 | MISSED APPROACH: Climb to 1200, then climbing left turn to 3000 direct CDB VORTAC, then on CDB R-325 to DEADS/CDB 10 DME and hold. |

| | | |
|--|---|-----------------------|
| ANCHORAGE CENTER 118.5 278.3 | COLD BAY RADIO 123.6 (CTAF) 0 | ASOS 135.75 |
|--|---|-----------------------|



EMERG SAFE ALT 100 NM 11,700

| | | | |
|------|-----|------|----|
| ELEV | 100 | THRE | 73 |
|------|-----|------|----|



| | | | |
|----------------------|------|---------|------|
| ELEV 100 | | THRE 73 | |
| 146° 5.1 NM from FAF | | | |
| Rwy 8 ldg 4900' | | | |
| Rwy 26 ldg 4900' | | | |
| HIRL all Rwy 0 | | | |
| FAF to MAP 4.5 NM | | | |
| Knots | 120 | 140 | 160 |
| Min:Sec | 2:15 | 1:56 | 1:41 |
| | | 1:30 | 1:21 |

| | | | |
|-------------|--------------|-------------|--------------|
| CATEGORY | C | D | E |
| S-ILS 15* | 460/40 | 387 | (400-¾) |
| S-LOC 15** | 500/40 | 427 | (500-1¼) |
| CIRCLING*** | 560-1½ | 660-2 | 820-2½ |
| | 458 (500-1½) | 558 (600-2) | 718 (800-2½) |

HI-ILS or LOC/DME RWY 15

AK, 25 APR 2019 to 20 JUN 2019

AK, 25 APR 2019 to 20 JUN 2019