

(CHUNA1.CHUNA) 17341

CHUNA ONE DEPARTURE

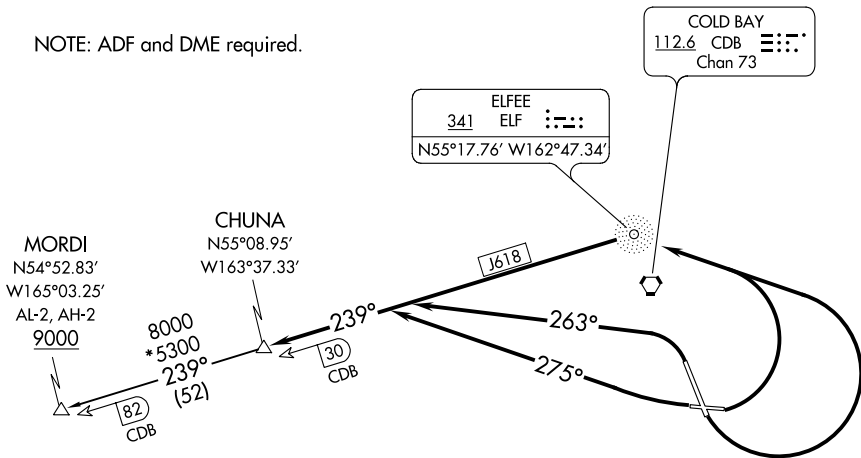
AL-1241 (FAA)

COLD BAY (CDB) (PACD)
COLD BAY, ALASKA

ANCHORAGE CENTER
118.5 278.3
COLD BAY RADIO
121.5

**TOP ALTITUDE:
ASSIGNED BY ATC**

NOTE: ADF and DME required.



TAKEOFF MINIMUMS

Rwys 8, 15, 33: Standard.

Rwy 26: Standard with a minimum climb of 400' per NM to 1300.

NOTE: Chart not to scale.



DEPARTURE ROUTE DESCRIPTION

TAKEOFF RUNWAYS 8, 15: Climbing left turn direct ELF NDB, thence. . . .

TAKEOFF RUNWAY 26: Climbing right turn heading 275°, thence. . . .

TAKEOFF RUNWAY 33: Climbing left turn heading 263°, thence. . . .

. . . . intercept the 239° bearing from ELF NDB to CHUNA, maintain assigned altitude.

MORDI TRANSITION (CHUNA1.MORDI): From over CHUNA on ELF NDB 239° to MORDI.

CHUNA ONE DEPARTURE
(CHUNA1.CHUNA) 07DEC17

COLD BAY, ALASKA
COLD BAY (CDB) (PACD)

AK, 25 APR 2019 to 20 JUN 2019

AK, 25 APR 2019 to 20 JUN 2019