

WAAS CH 70639 W31A	APP CRS 310°	Rwy Idg 5996 TDZE 974 Apt Elev 974
--	------------------------	---

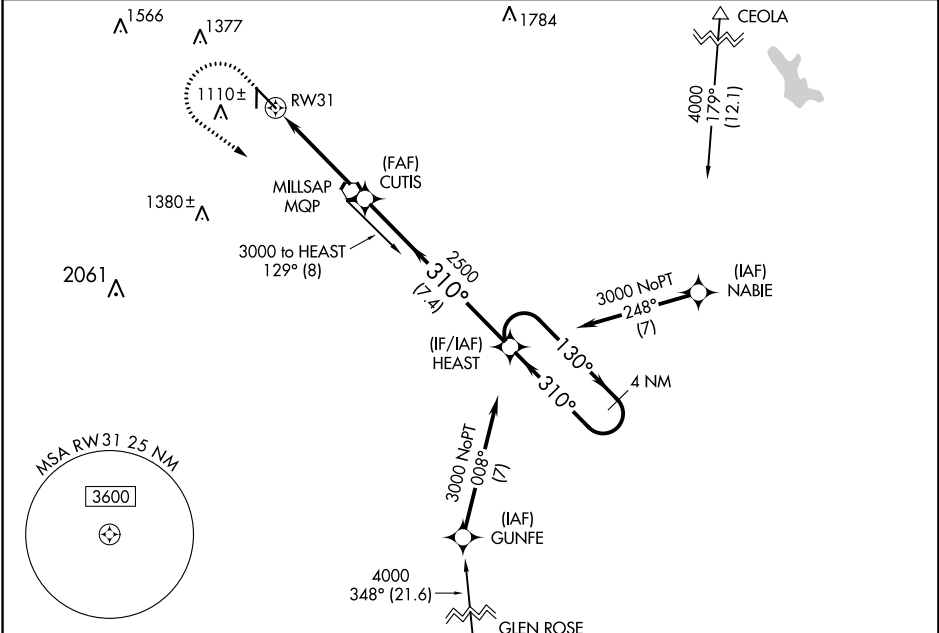
RNAV (GPS) RWY 31

MINERAL WELLS (MWL)

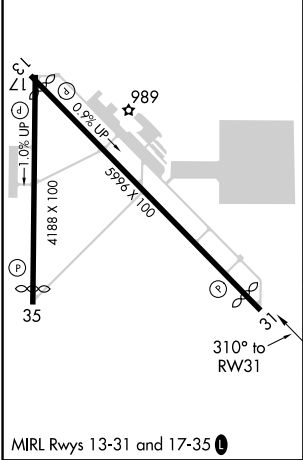
⚠ Circling to Rwy 17 NA at night. For uncompensated Baro-VNAV systems, LNAV/VNAV NA below -9°C (16°F) or above 54°C (130°F). Baro-VNAV and VDP NA when using Granbury Rgnl altimeter setting. DME/DME RNP-0.3 NA. When local altimeter setting not received, use Granbury Rgnl altimeter setting and increase LPV DA to 1256 feet and all visibilities 1/8 SM; LNAV/VNAV DA to 1306 feet and all visibilities 3/8 SM; increase all MDA 100 feet and LNAV visibility Cat C/D 3/8 mile, and Circling visibility Cat C/D 1/4 mile.

MISSED APPROACH: Climb to 1600 then climbing left turn to 4000 direct HEAST and hold.

ASOS 135.075	FORT WORTH CENTER 127.0 360.6	UNICOM 122.725 (CTAF) 0
------------------------	---	-----------------------------------



ELEV 974	TDZE 974
----------	----------



1600	4000	HEAST	4 NM Holding Pattern			
*LNAV only.		CUTIS	HEAST			
*1 NM to RWY31		2500	310°	130°	3000	GP 3.00° TCH 53
1 NM	3.6 NM	7.4 NM				
CATEGORY	A	B	C	D		
LPV DA	1174-3/4		200 (200-3/4)			
LNAV/VNAV DA	1224-3/4		250 (300-3/4)			
LNAV MDA	1340-1		366 (400-1)			
C CIRCLING	1420-1 446 (500-1)	1460-1 486 (500-1)	1740-2 1/4 766 (800-2 1/4)	1740-2 1/2 766 (800-2 1/2)		

SC-2, 25 APR 2019 to 23 MAY 2019

SC-2, 25 APR 2019 to 23 MAY 2019