

VOR/DME CIC <b>109.8</b> Chan <b>35</b>	APP CRS <b>327°</b>	Rwy Idg TDZE Apt Elev	<b>6724</b> <b>224</b> <b>238</b>
---	------------------------	-----------------------------	---

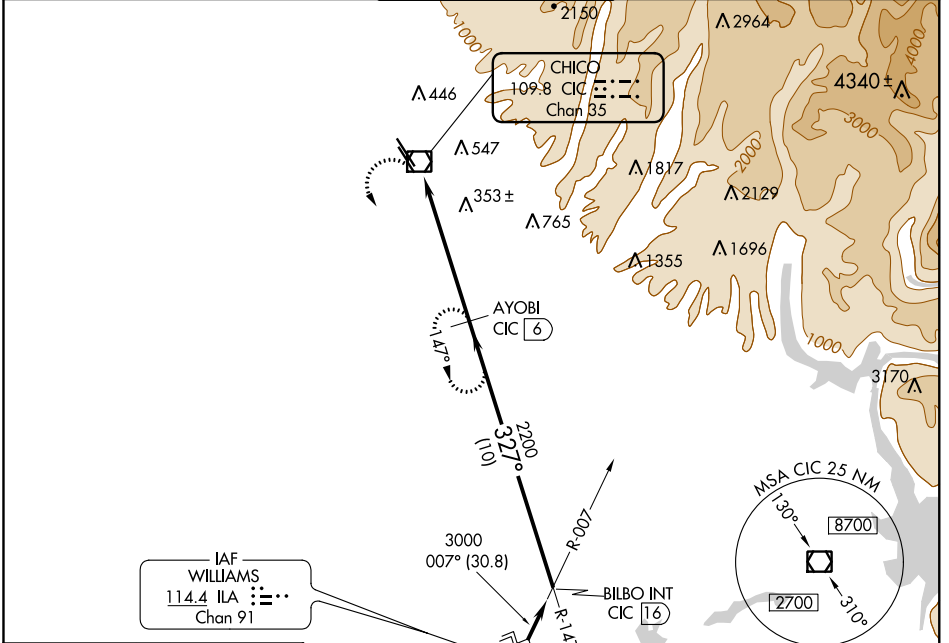
# VOR/DME RWY 31R

CHICO MUNI (CIC)

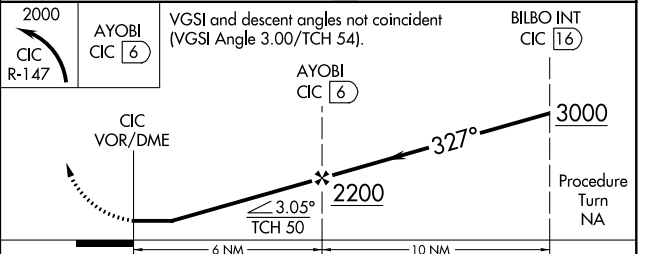
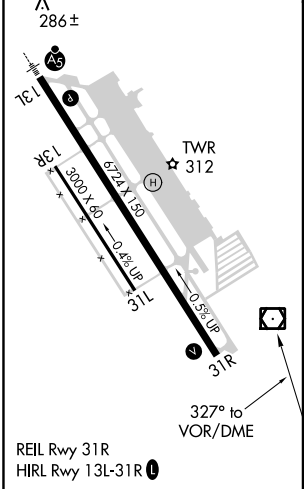
**⚠** Circling not authorized east of Rwy 13L-31R.  
**⚠** When control tower closed, except for operators with approved weather reporting service, use Red Bluff altimeter setting.

MISSED APPROACH: Climbing left turn to 2000 via CIC R-147 to AYOB/6 DME and hold.

ATIS <b>119.675</b>	OAKLAND CENTER <b>132.2 350.3</b>	CHICO TOWER ★ <b>121.0 (CTAF) 239.3</b>	GND CON <b>121.9</b>	UNICOM <b>122.95</b>
------------------------	--------------------------------------	--	-------------------------	-------------------------



ELEV 238	<b>D</b>	TDZE 224
----------	----------	----------



CATEGORY	A	B	C	D
S-31R	760-1 536 (600-1)	760-1½ 536 (600-1½)	760-1¾ 536 (600-1¾)	760-2 536 (600-2)
CIRCLING	760-1 522 (600-1)	760-1½ 522 (600-1½)	760-2 522 (600-2)	800-2 562 (600-2)
RED BLUFF ALTIMETER SETTING MINIMUMS				
S-31R	840-1 616 (700-1)	840-1¾ 616 (700-1¾)	840-2 616 (700-2)	840-2 616 (700-2)
CIRCLING	840-1 602 (700-1)	840-1¾ 602 (700-1¾)	840-2 602 (700-2)	840-2 602 (700-2)

SW-2, 25 APR 2019 to 23 MAY 2019

SW-2, 25 APR 2019 to 23 MAY 2019