

WAAS CH 77912 W31A	APP CRS 311°	Rwy ldg 6724 TDZE 226 Apt Elev 240
--	------------------------	---

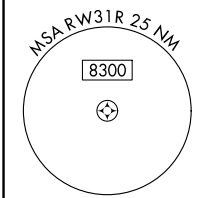
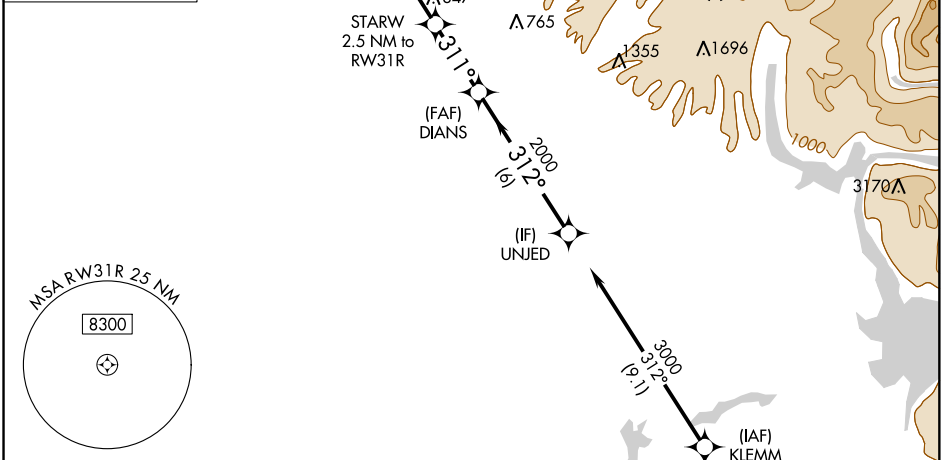
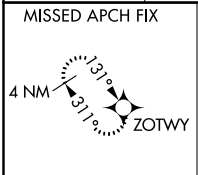
RNAV (GPS) RWY 31R

CHICO MUNI (CIC)

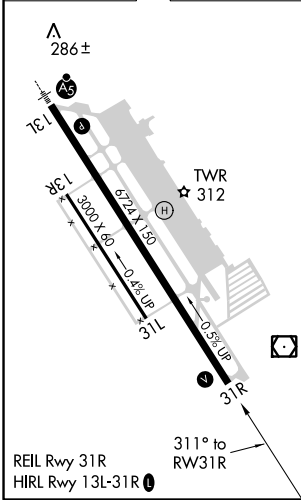
▼ For uncompensated Baro-VNAV systems, LNAV/VNAV NA below -15°C (5°F) or above 48°C (118°F).
DME/DME RNP-0.3 NA. Circling NA east of Rwy 13L/31R.

MISSED APPROACH: Climb to 3000 direct ZOTWY and hold.

ATIS 119.675	OAKLAND CENTER 132.2 350.3	CHICO TOWER ★ 121.0 (CTAF) 239.3	GND CON 121.9	UNICOM 122.95
------------------------	--------------------------------------	--	-------------------------	-------------------------



ELEV 240	D	TDZE 226
-----------------	----------	-----------------



3000	ZOTWY	VGSI and RNAV glidepath not coincident (VGSI Angle 3.00/TCH 54).	UNJED	
	STARW 2.5 NM to RWY 31R	DIANS	3000	
* LNAV only	* 1.1 NM to RWY 31R	2000		
	RWY 31R	* 1060	312°	
	1.1 NM	1.4 NM	2.9 NM	
			6 NM	
			GP 3.00° TCH 50	
CATEGORY	A	B	C	D
LPV DA		476-1	250 (300-1)	
LNAV/VNAV DA		733-1¾	507 (500-1¾)	
LNAV MDA		600-1	374 (400-1)	600-1¼ 374 (400-1¼)
CIRCLING	640-1 400 (400-1)	700-1 460 (500-1)	700-1½ 460 (500-1½)	800-2 560 (600-2)

SW-2, 25 APR 2019 to 23 MAY 2019

SW-2, 25 APR 2019 to 23 MAY 2019