

LOC/DME I-SAN	APP CRS	Rwy Idg	7280
111.55	095°	TDZE	17
Chan 52 (Y)		Apt Elev	17

ILS Y or LOC Y RWY 9

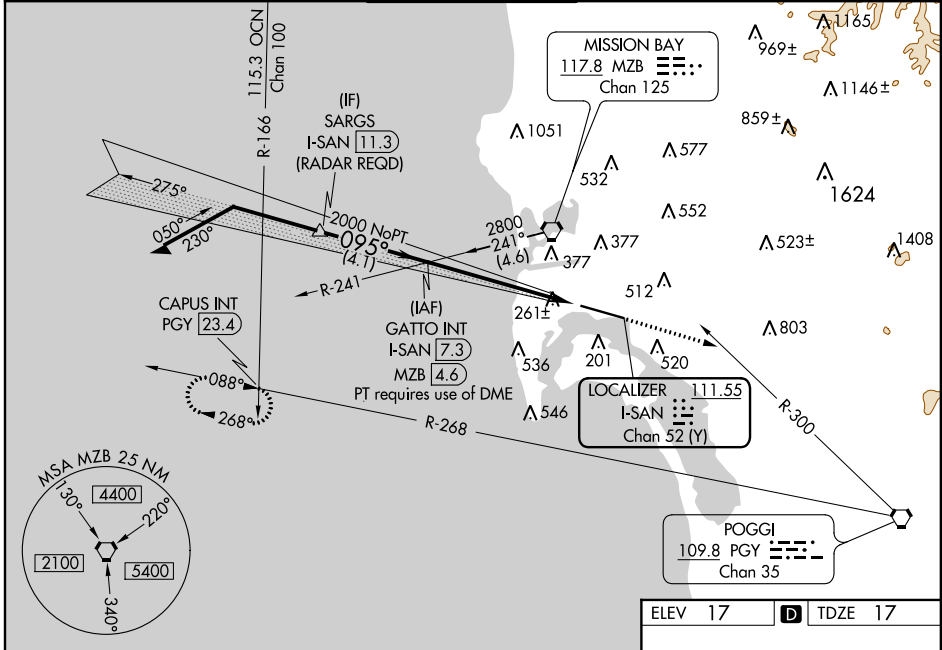
SAN DIEGO INTL (SAN)

⚠ Circling NA north of Rwy 9-27.
⚠ Autopilot coupled approach NA below 530.
 For inop ALS, increase S-ILS 9 all Cats visibility to 2½ miles.
 Rwy 9 helicopter visibility reduction below RVR 4000 NA.
 # Inop table does not apply to S-ILS 9.

MALS R

MISSED APPROACH: Climb to 5000 on heading 095° and on PGY VORTAC R-300 to PGY VORTAC, then right turn on PGY VORTAC R-268 to CAPUS INT/23.4 DME and hold.
 # Missed approach requires minimum climb of 270 feet per NM to 4000.

D-ATIS	SOCAL APP CON	LINDBERGH TOWER	GND CON	CLNC DEL	CPDLC
134.8	119.6 363.1 (WEST) 124.35 279.625 (EAST)	118.3 338.225	123.9	125.9	



VGSI and ILS glidepath not coincident (VGSI Angle 3.30/TCH 76).
 Remain within 10 NM

GATTO INT I-SAN **7.3** **2100**

2000 **275°** → **095°** → 2000

GS 3.10° TCH 55

3.3 NM 2.6 NM

5000 hdg 095°

PGY R-300 PGY R-268 CAPUS INT

*LOC only.

I-SAN **4** I-SAN **1.4**

ELEV 17	D TDZE 17
---------	------------------

095° 5.9 NM from FAF

TWR 159

9400 X 200

65± 70 48

175 407± 176

TDZ/CL Rwys 9 and 27
 HIRL Rwy 9-27

FAF to MAP 5.9 NM

Knots	60	90	120	150	180
Min:Sec	5:54	3:56	2:57	2:22	1:58

CATEGORY	A	B	C	D
S-ILS 9 #		258/40	241 (300-¾)	
S-ILS 9		751-2	734 (800-2)	
S-LOC 9	960/40	943 (1000-¾)	960-2	943 (1000-2)
C CIRCLING	960-1¼	943 (1000-1¼)	960-2¾ 943 (1000-2¾)	960-3 943 (1000-3)

SW-3, 25 APR 2019 to 23 MAY 2019

SW-3, 25 APR 2019 to 23 MAY 2019