

VORTAC IRQ 113.9 Chan 86	APP CRS 102°	Rwy Idg TDZE Apt Elev	N/A N/A 528
--	------------------------	-----------------------------	--

VOR/DME-A

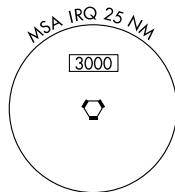
AIKEN RGNL (AIK)

NA When local altimeter setting not received, use Augusta Rgnl at Bush Field altimeter setting and increase all MDA 120 feet and increase Cat D visibility 1/4 mile.

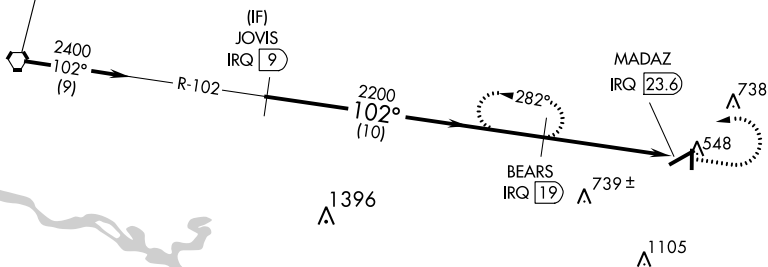
MISSED APPROACH: Climb to 1600 then climbing left turn to 2400 on IRQ VORTAC R-102 to BEARS/IRQ 19 DME and hold.

AWOS-3 118.025	AUGUSTA APP CON* 119.15 284.625	CLNC DEL 126.075	UNICOM 122.8 (CTAF) U
--------------------------	---	----------------------------	--

Procedure NA for arrivals at IRQ VORTAC on airway radials 062 CW 154.

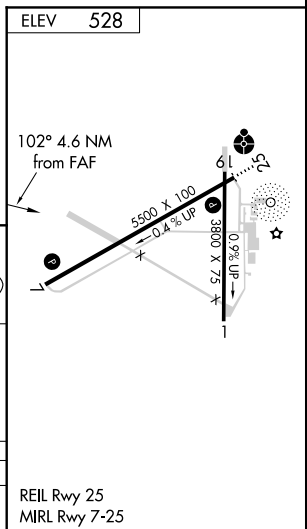


IAF
COLLIERS
113.9 IRQ
Chan 86



SE-2, 28 MAR 2019 to 25 APR 2019

SE-2, 28 MAR 2019 to 25 APR 2019



	JOVIS IRQ 9	1600	2400	BEARS IRQ 19
	2400		IRQ R-102	
				MADAZ IRQ 23.6
		2200		
	10 NM		4.6 NM	
CATEGORY	A	B	C	D
CIRCLING	980-1 452 (500-1)	1000-1¼ 472 (500-1¼)	1000-1½ 472 (500-1½)	1080-2 552 (600-2)
	REIL Rwy 25 MRL Rwy 7-25			