

NDB AIK 347	APP CRS 225°	Rwy Idg TDZE Apt Elev	5500 515 529
-----------------------	------------------------	-----------------------------	---

NDB RWY 25

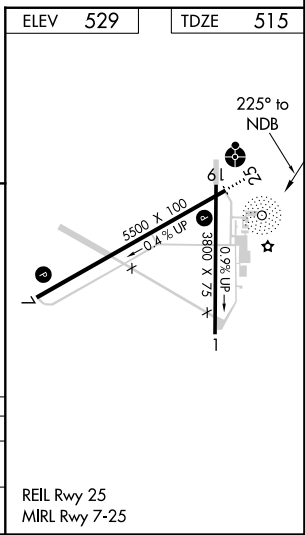
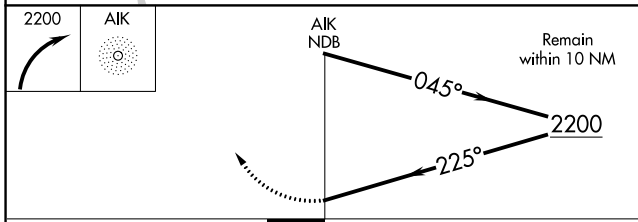
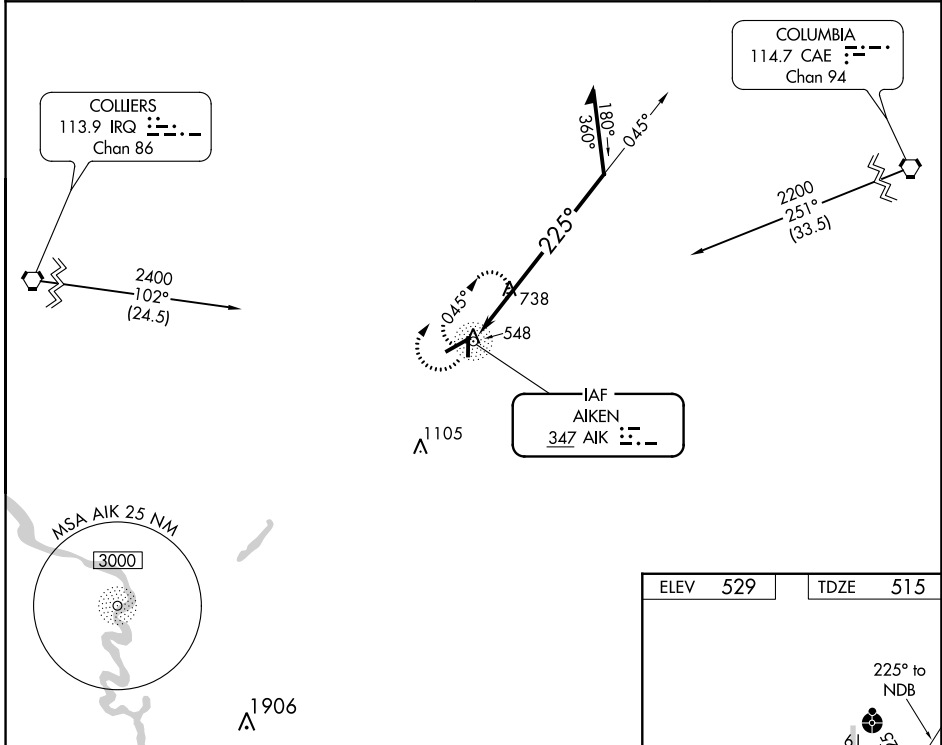
AIKEN RGNL (AIK)

NA When local altimeter setting not received, use Augusta Rgnl at Bush Field altimeter setting and increase all MDA 120 feet and S-25 Cat B/C/D and Circling Cat B visibility ¼ mile, Circling Cat C ½ mile and Circling Cat D ½ mile. For inop ODALS, increase S-25 Cat C/D visibility to 1 ½ mile. For inop ODALS when using Augusta Rgnl at Bush Field altimeter setting, increase S-25 Cat C/D visibility to 2 ½ mile. Helicopter visibility reduction below ¾ SM NA.

ODALS

MISSED APPROACH: Climbing right turn to 2200 in AIK NDB holding pattern.

AWOS-3 118.025	AUGUSTA APP CON ★ 119.15 284.625	CLNC DEL 126.075	UNICOM 122.8 (CTAF) 0
--------------------------	--	----------------------------	---------------------------------



CATEGORY	A	B	C	D
S-25	1180-¾	665 (700-¾)	1180-1¾	665 (700-1¾)
CIRCLING	1180-1	651 (700-1)	1180-1 7/8 651 (700-1 7/8)	1180-2 651 (700-2)

SE-2, 28 MAR 2019 to 25 APR 2019

SE-2, 28 MAR 2019 to 25 APR 2019