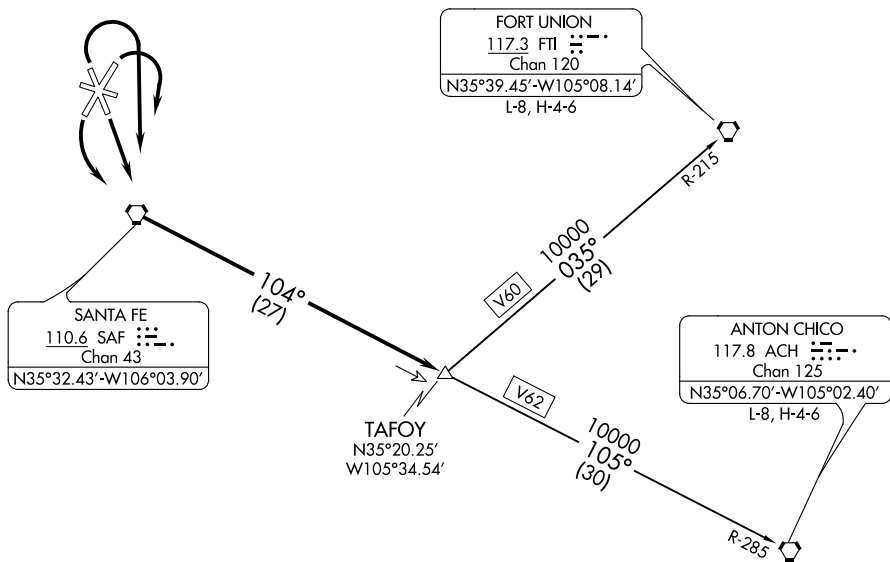


ATIS 128.55
GND CON
121.7
SANTA FE TOWER*
119.5 (CTAF) 239.3
ALBUQUERQUE CENTER
132.8 346.35



SW-1, 28 MAR 2019 to 25 APR 2019

SW-1, 28 MAR 2019 to 25 APR 2019

CAUTION: Mountainous terrain all quadrants.

NOTE: Takeoff runways 2, 33: Cat. A, B standard;
Cat. C, D requires a minimum climb of 330'/NM until
passing 9800' or a 2900' ceiling and 3 miles visibility.

NOTE: Chart not to scale.

DEPARTURE ROUTE DESCRIPTION

TAKEOFF RUNWAY 15: Climb direct to....

TAKEOFF RUNWAY 20: Climbing left turn direct to....

TAKEOFF RUNWAYS 2 & 33: Climbing right turn direct to....

....the SAF VORTAC. Proceed via the SAF R-104 to TAFOY INT, climb and maintain 10000 MSL. Thence via assigned (transition) or (route).

ANTON CHICO TRANSITION (TAFOY2.ACH): From over TAFOY INT, via V62/ACH R-285 to ACH VORTAC. Thence via (assigned) route.

FORT UNION TRANSITION (TAFOY2.FTI): From over TAFOY INT via V60/FTI R-215 to FTI VORTAC. Thence via (assigned) route.