

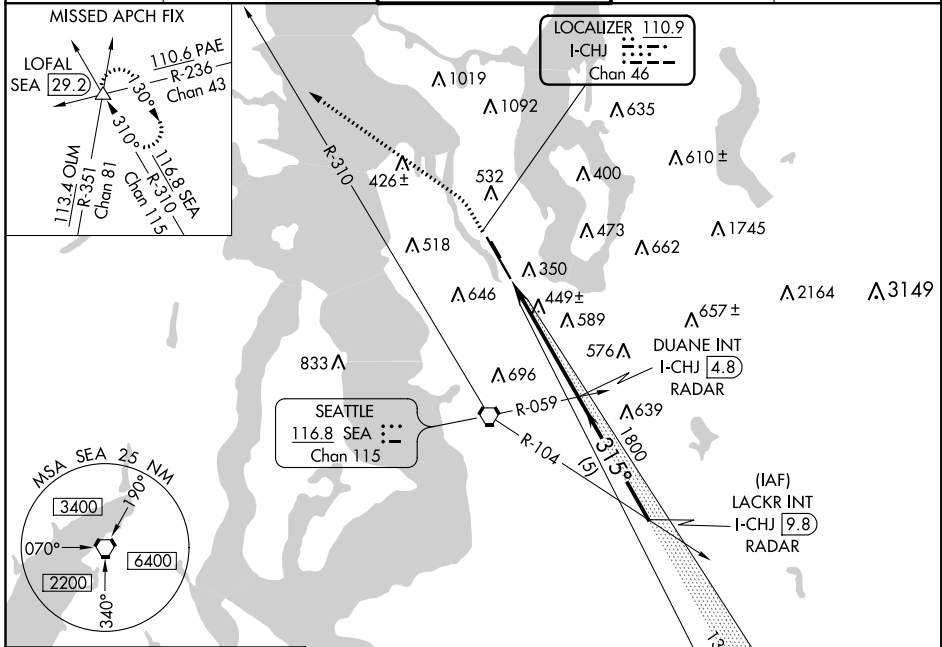
LOC/DME I-CHJ	APP CRS	Rwy Idg	9120
110.9	315°	TDZE	21
Chan 46		Apt Elev	21

ILS or LOC RWY 32L

BOEING FIELD/KING COUNTY INTL (BFI)

▼ Helicopter visibility reduction below 3/4 SM NA. **▲** MISSED APPROACH: Climb to 700 then climbing left turn to 6000 on heading 290° and SEA R-310 to LOFAL INT/SEA 29.2 DME and hold, continue climb-in-hold to 6000.

ATIS 127.75	SEATTLE APP CON 119.2 284.7	BOEING TOWER 120.6 257.8	GND CON 121.9	CLNC DEL 132.4
-----------------------	---------------------------------------	------------------------------------	-------------------------	--------------------------

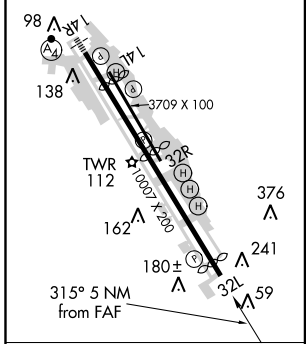


NW-1, 28 MAR 2019 to 25 APR 2019

NW-1, 28 MAR 2019 to 25 APR 2019

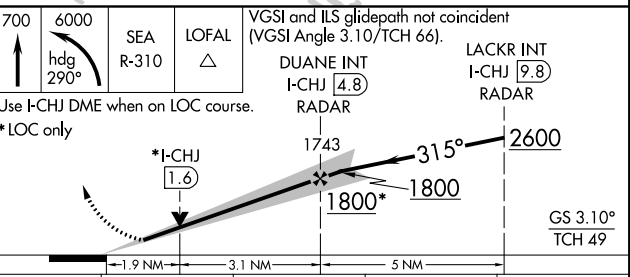
ELEV 21	D TDZE 21
---------	------------------

Λ 192 MIRL Rwy 14L-32R
 Λ 413 HIRL Rwy 14R-32L
 REIL Rwys 14L, 32L and 32R



FAF to MAP 5 NM					
Knots	60	90	120	150	180
Min:Sec	5:00	3:20	2:30	2:00	1:40

RADAR REQUIRED



CATEGORY	A	B	C	D
S-ILS 32L	428-1½ 407 (500-1½)			
S-LOC 32L	700-1 679 (700-1)	700-2 679 (700-2)	700-2¼ 679 (700-2¼)	
CIRCLING	780-1 759 (800-1)	840-1¼ 819 (900-1¼)	860-2½ 839 (900-2½)	960-3 939 (1000-3)