

WAAS CH 65923 W23A	APP CRS 227°	Rwy Idg TDZE Apt Elev	5003 1218 1219
--	------------------------	-----------------------------	---

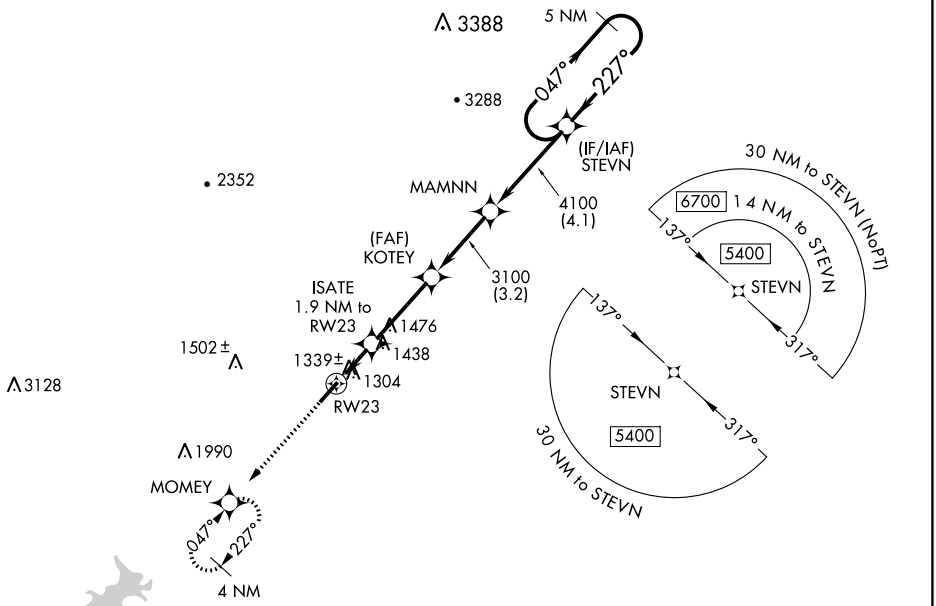
RNAV (GPS) RWY 23

CHEROKEE COUNTY (CNI)

⚠ DME/DME RNP-0.3 NA. Visibility reduction by helicopters NA. When local altimeter setting not received, use Marietta altimeter setting and increase all MDA 80 feet; increase LNAV and Circling Cat C visibility 1/8 mile, increase LP Cat C visibility 1/4 mile. Straight-in/Circling Rwy 23 procedure NA at night.

MISSED APPROACH: Climb to 4000 direct MOEMEY and hold, continue climb-in-hold to 4000.

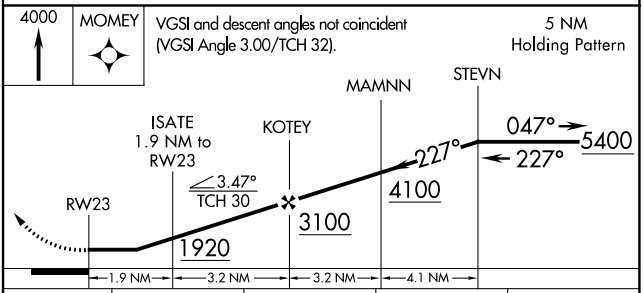
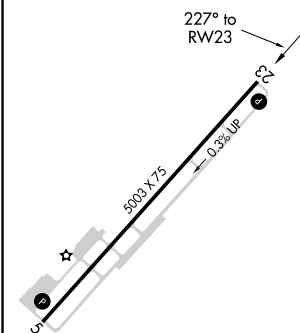
AWOS-3 119.825	ATLANTA APP CON 121.0 268.7	UNICOM 123.0 (CTAF)
--------------------------	---------------------------------------	-------------------------------



SE-4, 28 FEB 2019 to 28 MAR 2019

SE-4, 28 FEB 2019 to 28 MAR 2019

ELEV 1219	TDZE 1218
-----------	-----------



CATEGORY	A	B	C	D
LP MDA	1600-1	382 (400-1)	1600-1 1/8 382 (400-1 1/8)	NA
LNAV MDA	1740-1	522 (600-1)	1740-1 1/8 522 (600-1 1/8)	NA
CIRCLING	1740-1	521 (600-1)	1740-1 1/8 521 (600-1 1/8)	NA