

VOR/DME JFK 115.9 Chan 106	APP CRS 052°	Rwy Idg 11010 TDZE 13 Apt Elev 13
--	------------------------	--

VOR RWY 4L

JOHN F KENNEDY INTL (JFK)

		MISSED APPROACH: Climb to 2000 then climbing right turn to 3000 on JFK VOR/DME R-062 to DUFFY INT/JFK 14.8 DME and hold.			
--	--	--	--	--	--

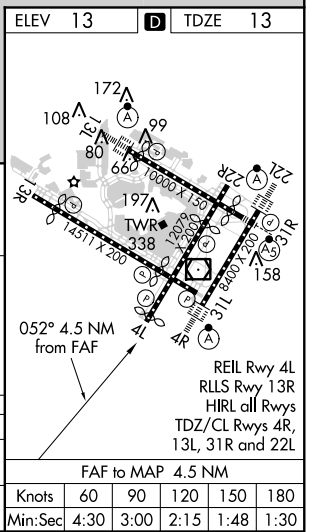
D-ATIS (ARR/DEP) (ARR-NE) (ARR-SW) 128.725 117.7 115.4	NEW YORK APP CON 128.125 269.0	KENNEDY TOWER Rwys 4R/22L and 13L/31R 119.1 281.55 Rwys 4L/22R and 13R/31L 123.9 281.55	GND CON 121.9 348.6	CLNC DEL 135.05 348.6	CPDLC
---	--	---	-------------------------------	---------------------------------	-------



NE-2, 28 FEB 2019 to 28 MAR 2019

NE-2, 28 FEB 2019 to 28 MAR 2019

One Minute Holding Pattern	KTAIT INT JFK (5.3) RADAR	2000	3000	DUFFY INT
1500 ← 232°	→ 052°	3.02° TCH 57	JFK (2.1)	JFK (0.8)
VGSI and descent angles not coincident (VGSI Angle 3.00/TCH 75).		3.2 NM	1.2	
CATEGORY	A	B	C	D
S-4L	480/55	467 (500-1)	480-1 ³ / ₈	467 (500-1 ³ / ₈)
CIRCLING	640-1	627 (700-1)	640-1 ³ / ₄	660-2 647 (700-2)



FAF to MAP 4.5 NM					
Knots	60	90	120	150	180
Min:Sec	4:30	3:00	2:15	1:48	1:30