

WAAS CH <b>81819</b> <b>W04B</b>	APP CRS <b>044°</b>	Rwy Idg <b>8400</b> TDZE <b>12</b> Apt Elev <b>13</b>
--	------------------------	---

# RNAV (GPS) Y RWY 4R

JOHN F KENNEDY INTL (JFK)

RNP APCH.

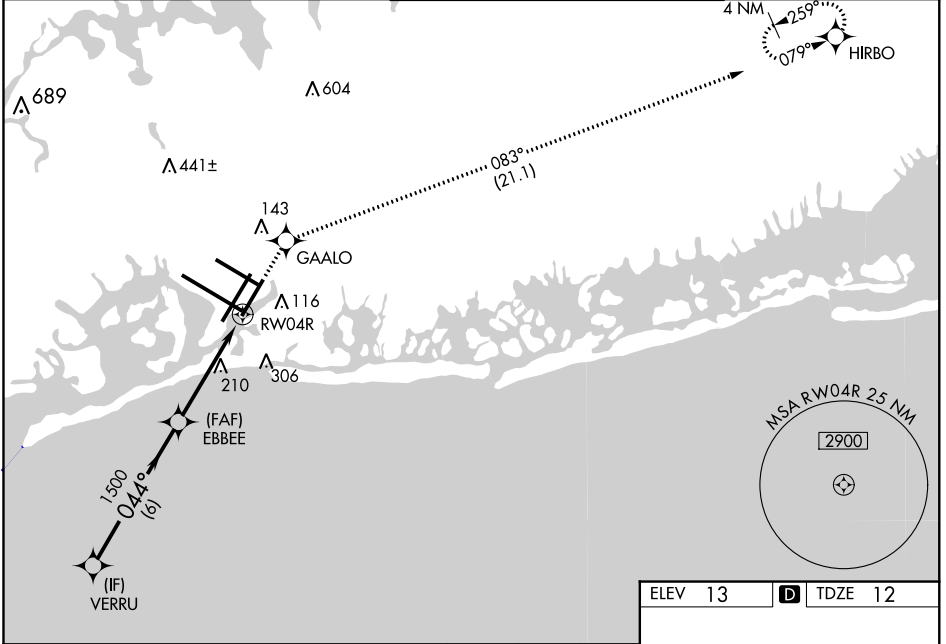
▼ For uncompensated Baro-VNAV systems, LNAV/VNAV NA below -12°C (11°F) or above 54°C (130°F). Simultaneous approach authorized. LNAV procedure NA during simultaneous operations. Use of FD or AP providing RNAV track guidance required during simultaneous operations. For Inop ALS, increase LNAV/VNAV all Cats visibility to RVR 6000 and LNAV Cat C/D visibility to 1½ SM.

ALSF-2



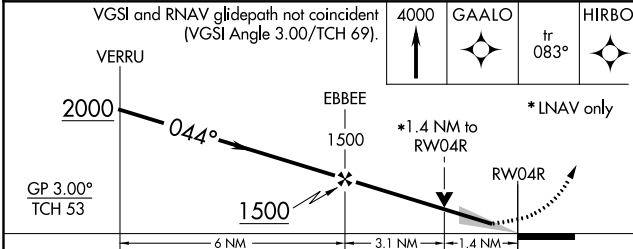
MISSED APPROACH: (Do not exceed 210K until GAALO) Climb to 4000 direct GAALO and on track 083° to HIRBO and hold.

D-ATIS (ARR/DEP) (ARR-NE) (ARR-SW)			NEW YORK APP CON		KENNEDY TOWER Rwys 4R/22L and 13L/31R		GND CON	CLNC DEL	CPDLC
<b>128.725</b>	<b>117.7</b>	<b>115.4</b>	<b>128.125</b>	<b>269.0</b>	<b>119.1</b>	<b>281.55</b>	<b>121.9</b>	<b>135.05</b>	
					Rwys 4L/22R and 13R/31L	<b>123.9</b>	<b>281.55</b>	<b>348.6</b>	<b>348.6</b>



NE-2, 28 FEB 2019 to 28 MAR 2019

NE-2, 28 FEB 2019 to 28 MAR 2019



CATEGORY	A	B	C	D
LPV DA		212/18	200 (200-½)	
LNAV/VNAV DA		369/40	357 (400-¾)	
LNAV MDA	520/24	508 (600-½)	520/55	508 (600-1)
<b>C</b> CIRCLING	640-1	627 (700-1)	640-1¾ 627 (700-1¾)	660-2 647 (700-2)

