

WAAS CH 77519	APP CRS 044°	Rwy Idg 11010 TDZE 13 Apt Elev 13
-------------------------	------------------------	--

RNAV (GPS) Y RWY 4L

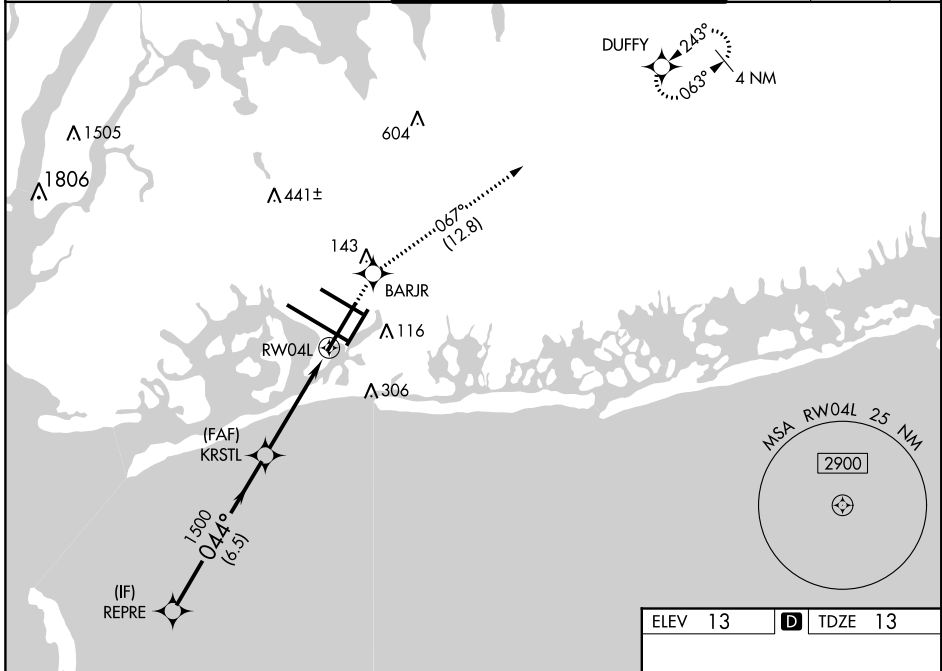
JOHN F KENNEDY INTL (JFK)

RNP APCH.

▼ For uncompensated Baro-VNAV systems, LNAV/VNAV NA below -12°C (11°F) or above 54°C (130°F). Simultaneous approach authorized. Use of FD or AP providing RNAV track guidance required during simultaneous operations. LNAV procedure NA during simultaneous operations.

MISSED APPROACH: (Do not exceed 210K until BARJR) Climb to 3000 direct BARJR and track 067° to DUFFY and hold.

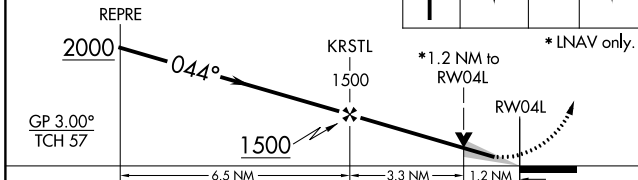
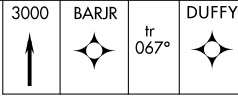
D-ATIS (ARR/DEP)(ARR-NE) (ARR-SW) 128.725 117.7 115.4	NEW YORK APP CON 128.125 269.0	KENNEDY TOWER Rwys 4R/22L and 13L/31R 119.1 281.55 Rwys 4L/22R and 13R/31L 123.9 281.55	GND CON 121.9 348.6	CLNC DEL 135.05 348.6	CPDLC
--	--	---	-------------------------------	---------------------------------	-------



NE-2, 28 FEB 2019 to 28 MAR 2019

NE-2, 28 FEB 2019 to 28 MAR 2019

VGSI and RNAV glidepath not coincident (VGSI Angle 3.00/TCH 75).



CATEGORY	A	B	C	D
LPV DA		232/40	219 (300-¾)	
LNAV/VNAV DA		329/50	316 (400-1)	
LNAV MDA	480/55	467 (500-1)	480-1⅜	467 (500-1⅜)
C CIRCLING	640-1	627 (700-1)	640-1¾	660-2 647 (700-2)

