

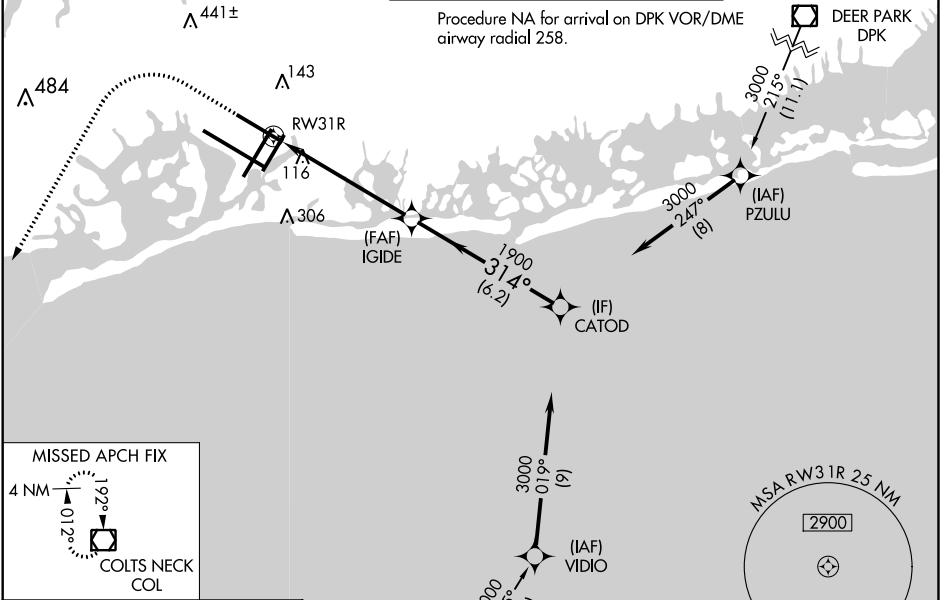
WAAS CH <b>45519</b> <b>W31B</b>	APP CRS <b>314°</b>	Rwy ldg <b>8486</b> TDZE <b>12</b> Apt Elev <b>13</b>
--	------------------------	---

# RNAV (GPS) Y RWY 31R

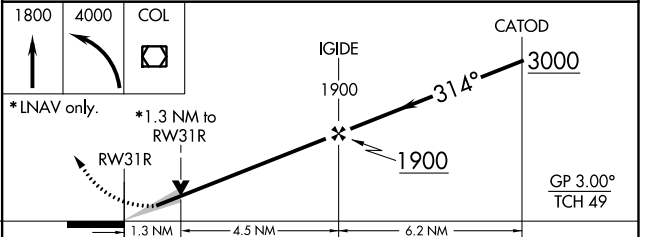
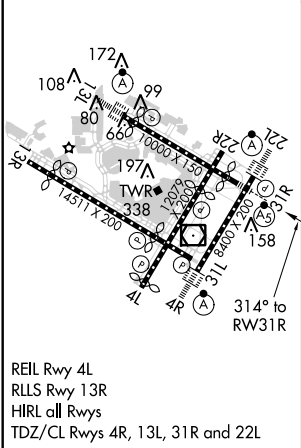
JOHN F KENNEDY INTL (JFK)

RNP APCH.	MALSR 	MISSED APPROACH: Climb to 1800 then climbing left turn to 4000 direct COL VOR/DME and hold.
<p>▼ For uncompensated Baro-VNAV systems, procedure NA below -12°C or above 54°C. Simultaneous approach authorized. Minimum altitude at CATOD 2000 when authorized by ATC. Use of FD or AP required during simultaneous operations. LNAV procedure NA during simultaneous operations.</p>		

D-ATIS (ARR/DEP) (ARR-NE) (ARR-SW) <b>128.725 117.7 115.4</b>	NEW YORK APP CON <b>128.125 269.0</b>	KENNEDY TOWER Rwys 4R/22L and 13L/31R <b>119.1 281.55</b> Rwys 4L/22R and 13R/31L <b>123.9 281.55</b>	GND CON <b>121.9 348.6</b>	CLNC DEL <b>135.05 348.6</b>	CPDLC
---	--	---	-------------------------------	---------------------------------	-------



ELEV 13	<b>D</b>	TDZE 12
---------	----------	---------



CATEGORY	A	B	C	D
LPV DA		212/18	200 (200-½)	
LNAV/VNAV DA		369/35	357 (400-¾)	
LNAV MDA	460/24	448 (500-½)	460/45	448 (500-¾)
<b>C</b> CIRCLING	640-1	627 (700-1)	640-1¾ 627 (700-1¾)	660-2 647 (700-2)

NE-2: 28 FEB 2019 to 28 MAR 2019

NE-2: 28 FEB 2019 to 28 MAR 2019