

RNAV (RNP) Z RWY 22L

JOHN F KENNEDY INTL (JFK)

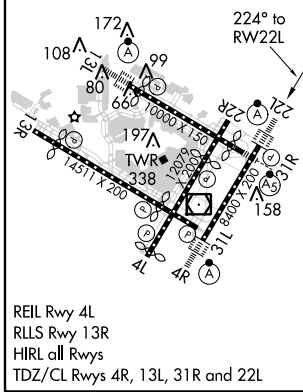
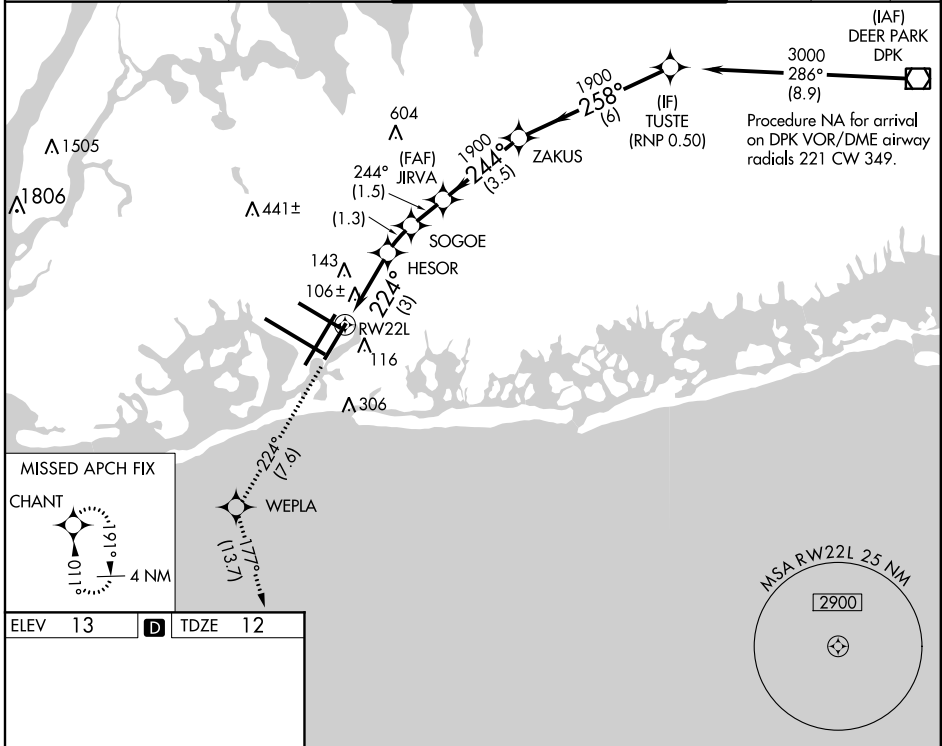
APP CRS	Rwy Idg	8400
224°	TDZE	12
	Apt Elev	13

RF required. RNP AR APCH.

▼ For uncompensated Baro-VNAV systems, procedure NA below -12°C (11°F) or above 54°C (130°F). Simultaneous approach authorized. Use of FD or AP providing RNAV track guidance required during simultaneous operations. For inop ALS, increase RNP 0.20 all Cats visibility to RVR 5500, increase RNP 0.30 all Cats visibility to RVR 6000.

ALSF-2	MISSED APPROACH: Climb to 3000 on track 224° to WEPLA and on track 177° to CHANT and hold.

D-ATIS	NEW YORK APP CON	KENNEDY TOWER	GND CON	CLNC DEL	CPDLC
(ARR/DEP) (ARR-NE) (ARR-SW)	128.125 269.0	Rwys 4R/22L and 13L/31R 119.1 281.55 Rwys 4L/22R and 13R/31L 123.9 281.55	121.9 348.6	135.05 348.6	



ELEV 13	D	TDZE 12
<p>3000 tr 224° WEPLA tr 177° CHANT</p> <p>VGSI and RNAV glidepath not coincident (VGSI Angle 3.00/TCH 66).</p>		
<p>JIRVA ZAKUS TUSTE</p> <p>HESOR SOGOE</p> <p>1019 1429</p> <p>1900 1900</p> <p>224° 258°</p> <p>3000</p> <p>GP 3.00° TCH 50</p>		
<p>← 3 NM 1.3 NM 1.5 NM 3.5 NM 6 NM →</p>		
CATEGORY	A	B C D
RNP 0.20 DA		361/40 349 (400-¾)
RNP 0.30 DA		421/40 409 (500-¾)

AUTHORIZATION REQUIRED