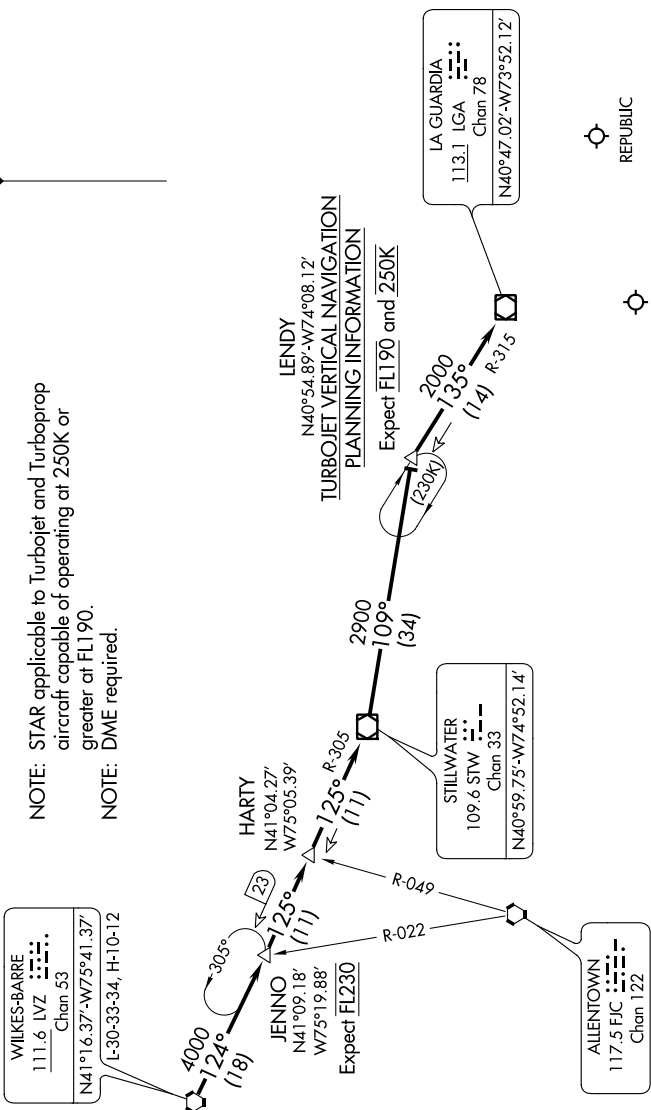


# LENDY SIX ARRIVAL

NE-2, 28 FEB 2019 to 28 MAR 2019

NEW YORK APP CON  
 128.125 289.0  
 JOHN F KENNEDY INTL D-ATIS  
 128.725 (ARR/DEP)  
 117.7 (ARR-NE)  
 115.4 (ARR-SW)  
 REPUBLIC ATIS  
 126.65



NOTE: STAR applicable to Turbojet and Turboprop aircraft capable of operating at 250K or greater at FL190.  
 NOTE: DME required.

JOHN F KENNEDY INTL

REPUBLIC

NOTE: Chart not to scale.

**ARRIVAL ROUTE DESCRIPTION**

From over LVZ VORTAC on LVZ R-124 to JENNO, then STW R-305 to HARTY INT, then STW R-305 to STW VOR/DME, then from STW VOR/DME on STW R-109 to LENDY, then on LGA R-315 to LGA VOR/DME. Expect radar vectors to final approach course after LGA VOR/DME.

# LENDY SIX ARRIVAL

NE-2, 28 FEB 2019 to 28 MAR 2019