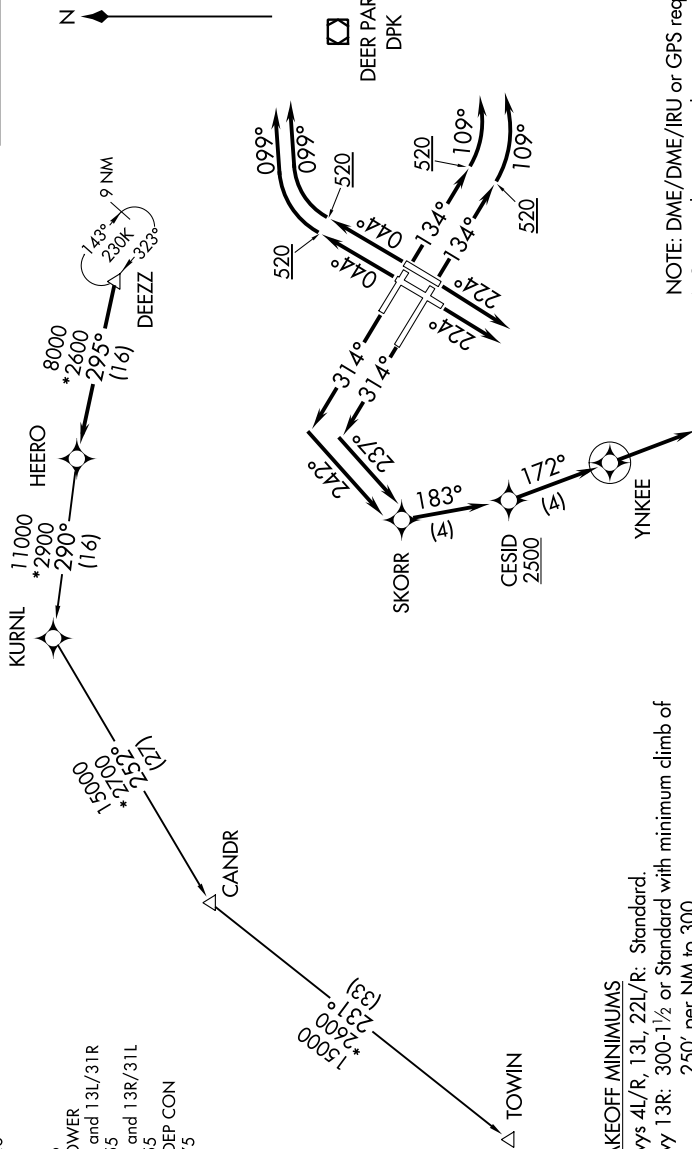


# DEZZ FIVE DEPARTURE (RNAV)

NE-2, 28 FEB 2019 to 28 MAR 2019

**TOP ALTITUDE:  
5000**

- D-ATIS 128.725
- CLNC DEL 135.05 348.6
- CPDIC
- GND CON 121.9 348.6
- KENNEDY TOWER 119.1 281.55
- Rwys 4R/22L and 13L/31R 123.9 281.55
- Rwys 4L/22R and 13R/31L 135.9 353.75
- NEW YORK DEP CON 135.9 353.75



**TAKEOFF MINIMUMS**  
 Rwys 4L/R, 13L, 22L/R: Standard.  
 Rwy 13R: 300-1/2 or Standard with minimum climb of 250' per NM to 300.  
 Rwys 31L/R: Standard with minimum climb of 500' per NM to 1400.

NOTE: DME/DME/IRU or GPS required.  
 NOTE: Radar Required.  
 NOTE: RNAV 1.  
 NOTE: TOWIN transition ATC assigned only.

(NARRATIVE ON FOLLOWING PAGE)

NOTE: Chart not to scale.