

# BETTE SIX DEPARTURE

AL-610 (FAA)

JOHN F KENNEDY INTL (JFK)  
NEW YORK, NEW YORK

NE-2, 28 FEB 2019 to 28 MAR 2019

NE-2, 28 FEB 2019 to 28 MAR 2019

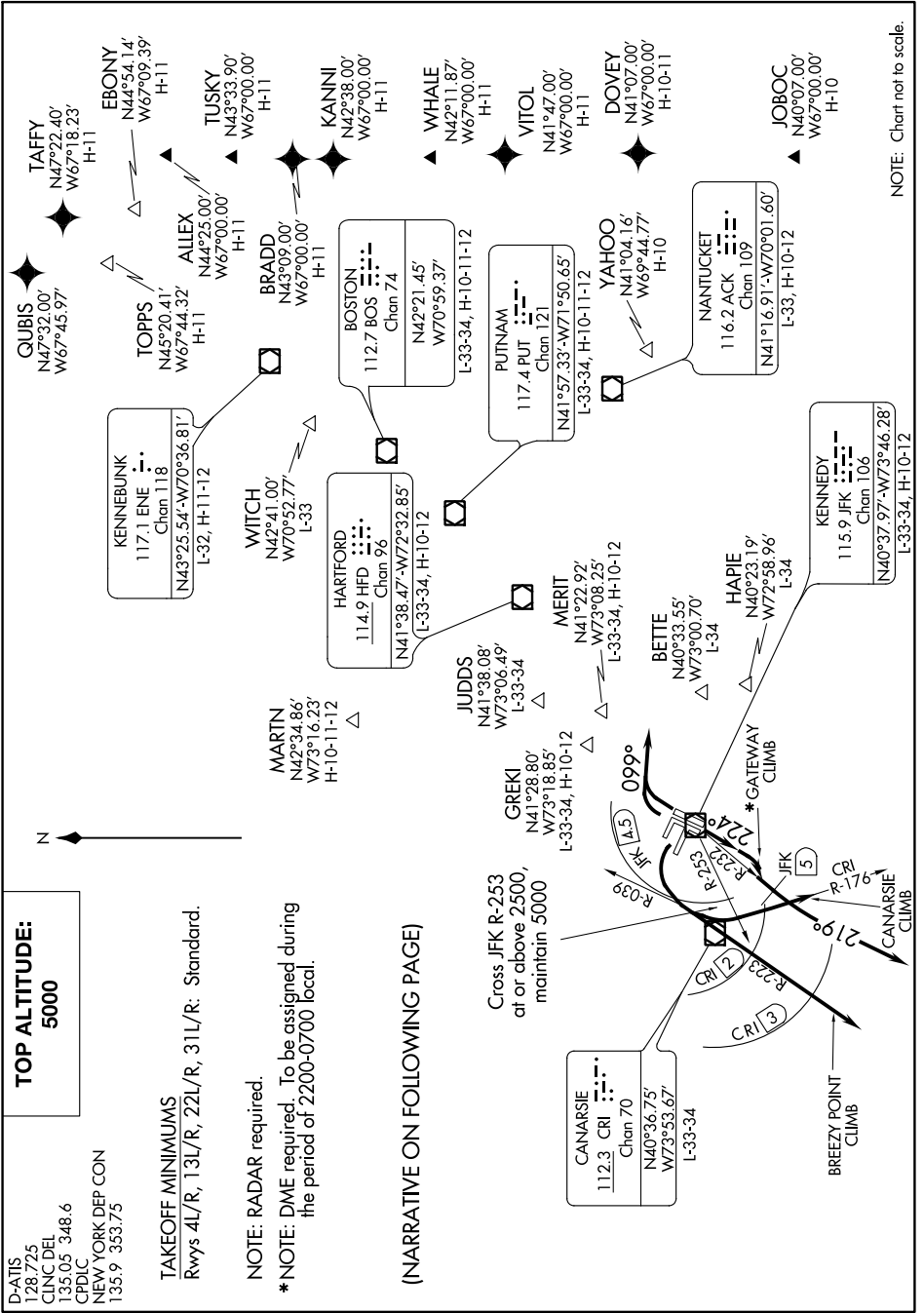
**TOP ALTITUDE:**  
**5000**

D-ATIS  
128.725  
CLNC DEL  
135.05 348.6  
CRDLC  
NEW YORK DEP CON  
135.9 353.75

**TAKEOFF MINIMUMS**  
Rwys 4L/R, 13L/R, 22L/R, 31L/R: Standard.

NOTE: RADAR required.  
\*NOTE: DME required. To be assigned during the period of 2200-0700 local.

(NARRATIVE ON FOLLOWING PAGE)



NOTE: Chart not to scale.

# BETTE SIX DEPARTURE

(BETTE6.BETTE) 19JUL18

NEW YORK, NEW YORK  
JOHN F KENNEDY INTL (JFK)