

RNAV (GPS) Y RWY 16R

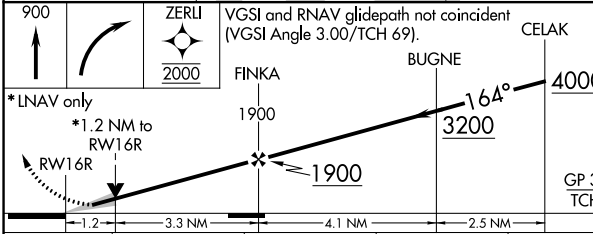
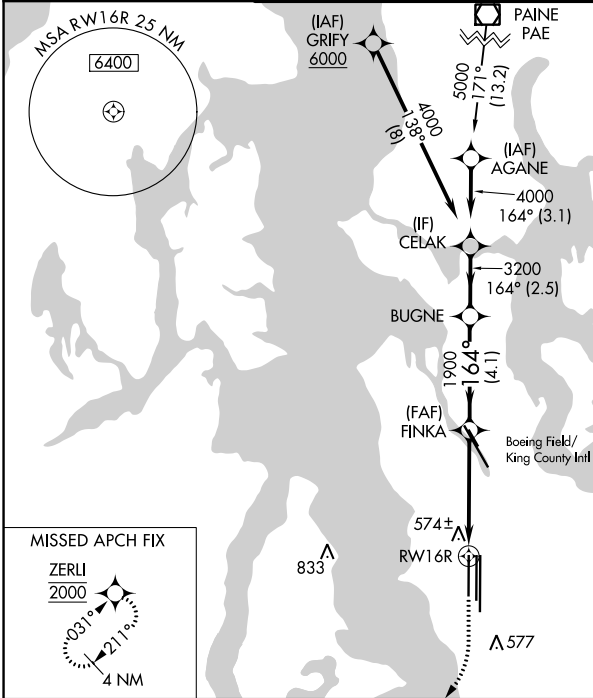
SEATTLE-TACOMA INTL (SEA)

WAAS CH 86910 W16D	APP CRS 164°	Rwy Idg TDZE Apt Elev	8500 415 433
--	------------------------	-----------------------------	---

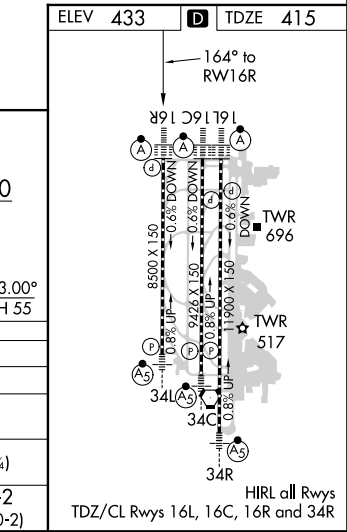
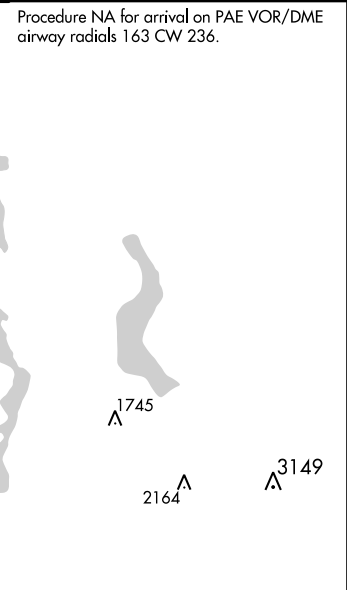
▼ For uncompensated Baro-VNAV systems, LNAV/VNAV NA below -6°C (22°F) or above 54°C (130°F). Simultaneous approach authorized with Rwy 16L. DME/DME RNP-0.3 NA. LNAV procedure NA during simultaneous operations. Use of FD or AP providing RNAV track guidance required during simultaneous operations.

ALSF-2
MISSED APPROACH: Climb to 900 then climbing right turn direct ZERLI to cross RWY 16R at 2000 and hold. When authorized by ATC, climb-in-hold to 5000.

D-ATIS 118.0	SEATTLE APP CON 133.65 273.45	SEATTLE TOWER 119.9 239.3 (Rwys 16L, 16C, 34C, 34R) 120.95 239.3 (Rwys 16R, 34L)	GND CON 121.7	CLNC DEL 128.0	CPDLC
------------------------	---	--	-------------------------	--------------------------	-------



CATEGORY	A	B	C	D
LPV DA		615/18	200 (200-½)	
LNAV/VNAV DA		760/32	345 (400-¾)	
LNAV MDA	840/24	425 (500-½)	840/40	425 (500-¾)
CIRCLING	1000-1	567 (600-1)	1000-1½ 567 (600-1½)	1000-2 567 (600-2)



NW-1, 28 FEB 2019 to 28 MAR 2019

NW-1, 28 FEB 2019 to 28 MAR 2019