

| | |
|------------------------|------------------------|
| APP CRS 344° | Rwy Idg 9426 |
| | TDZE 387 |
| | Apt Elev 433 |

RNAV (RNP) Z RWY 34C

SEATTLE-TACOMA INTL (SEA)

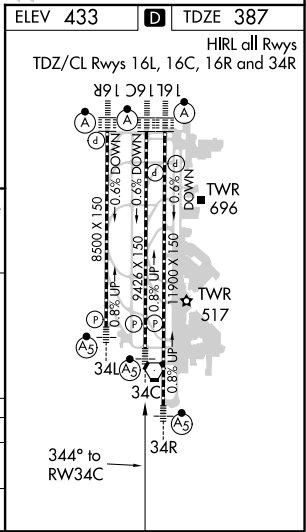
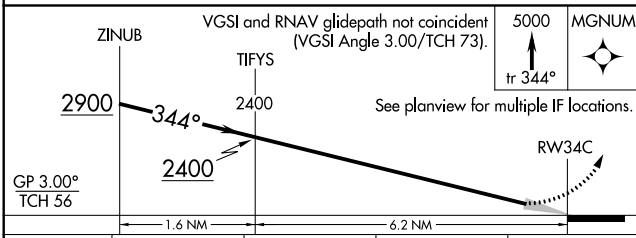
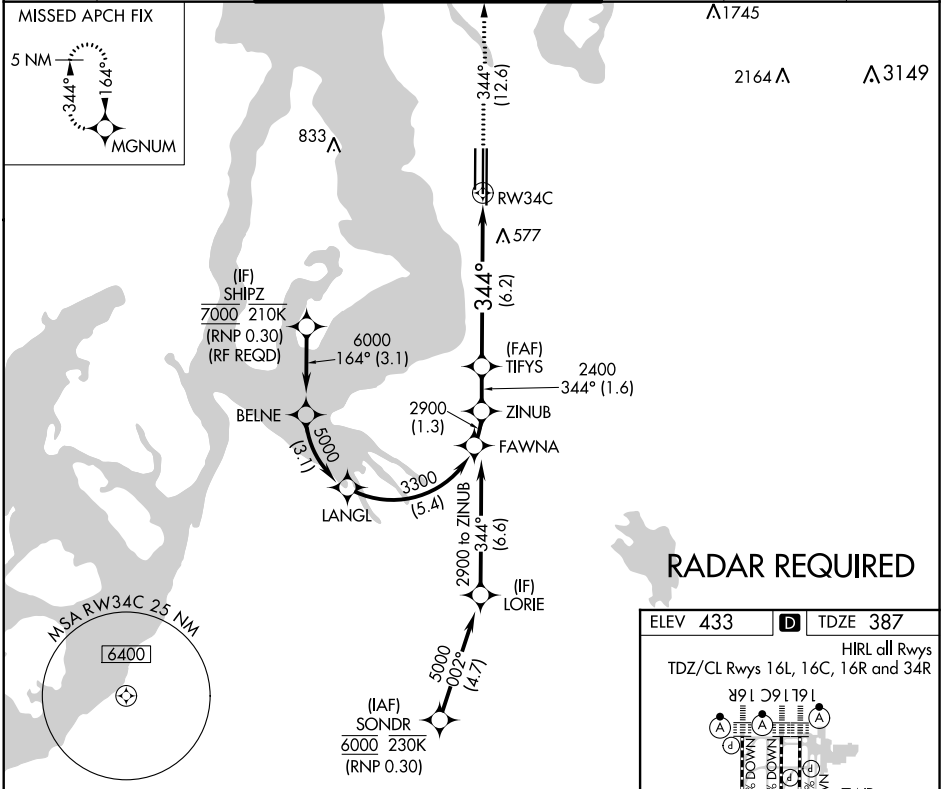
GPS required. For uncompensated Baro-VNAV systems, procedure NA below -6°C (22°F) or above 54°C (130°F). Simultaneous approach authorized with Rwy 34L except arrivals at SHIPZ. Use of FD or AP providing RNAV track guidance required during simultaneous operations.

MALSR



MISSED APPROACH: Climb to 5000 on track 344° to MGNUM and hold, continue climb-in-hold to 5000.

| | | | | | |
|------------------------|---|--|-------------------------|--------------------------|-------|
| D-ATIS 118.0 | SEATTLE APP CON 133.65 273.45 | SEATTLE TOWER 119.9 239.3 (Rwys 16L, 16C, 34C, 34R) 120.95 239.3 (Rwys 16R, 34L) | GND CON 121.7 | CLNC DEL 128.0 | CPDLC |
|------------------------|---|--|-------------------------|--------------------------|-------|



| | | | | |
|-------------------------------|--------------------|---|---|---|
| CATEGORY | A | B | C | D |
| RNP 0.30 DA | 808/50 421 (400-1) | | | |
| AUTHORIZATION REQUIRED | | | | |

NW-1, 28 FEB 2019 to 28 MAR 2019

NW-1, 28 FEB 2019 to 28 MAR 2019