

APP CRS	Rwy Idg	8500
164°	TDZE	415
	Apt Elev	433

RNAV (RNP) Z RWY 16R

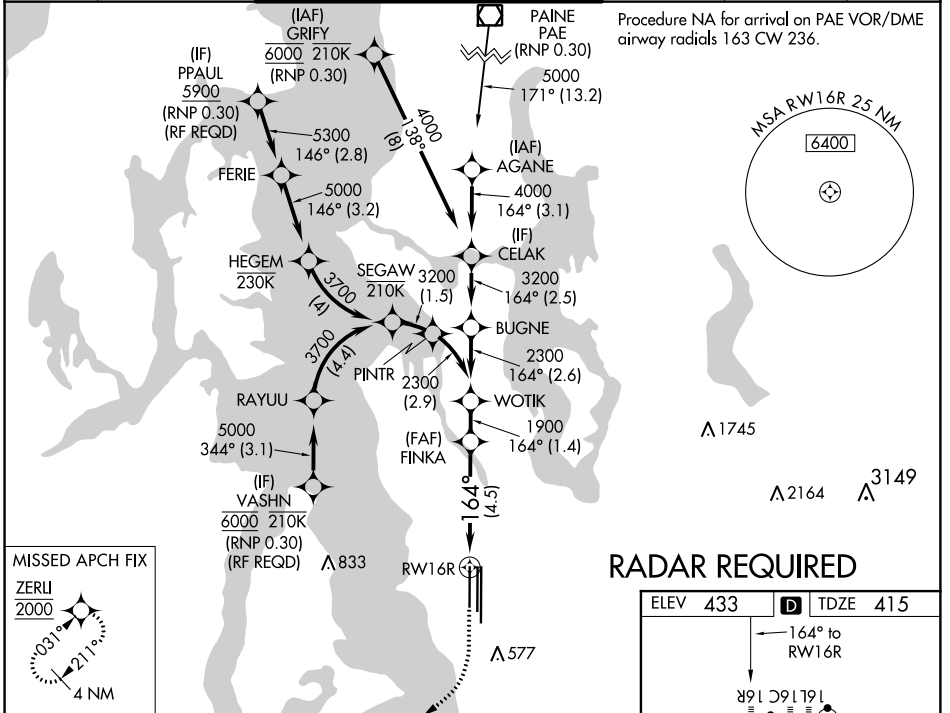
SEATTLE-TACOMA INTL (SEA)

▼ For uncompensated Baro-VNAV systems, procedure NA below -6°C (22°F) or above 54°C (130°F). Simultaneous approach authorized with Rwy 16L, except for arrivals at PPAUL and VASHN. GPS required. Use of FD or AP providing RNAV track guidance required during simultaneous operations. For inop ALS, increase RNP 0.15 all Cats visibility to RVR 5800, increase RNP 0.30 all Cats visibility to 1½ SM.

ALSF-2

MISSED APPROACH: Climb to 900 then climbing right direct ZERLI to cross ZERLI at 2000 and hold, when authorized by ATC, continue climb in hold to 5000.

D-ATIS	SEATTLE APP CON	SEATTLE TOWER	GND CON	CLNC DEL	CPDLC
118.0	133.65 273.45	119.9 239.3 (Rwys 16L, 16C, 34C, 34R) 120.95 239.3 (Rwys 16R, 34L)	121.7	128.0	



NW-1, 28 FEB 2019 to 28 MAR 2019

NW-1, 28 FEB 2019 to 28 MAR 2019

900	ZERLI	VGSI and RNAV glidepath not coincident (VGSI Angle 3.00/TCH 69).	WOTIK	
	2000			
See planview for multiple IF locations.				
		FINKA	WOTIK	
		1900	2300	
			164°	
			1900	
			GP 3.00°	
			TCH 55'	
		4.5 NM	1.4 NM	
CATEGORY	A	B	C	D
RNP 0.15 DA		770/34	355 (400-5%)	
RNP 0.30 DA		854/50	439 (500-1)	
AUTHORIZATION REQUIRED				

