

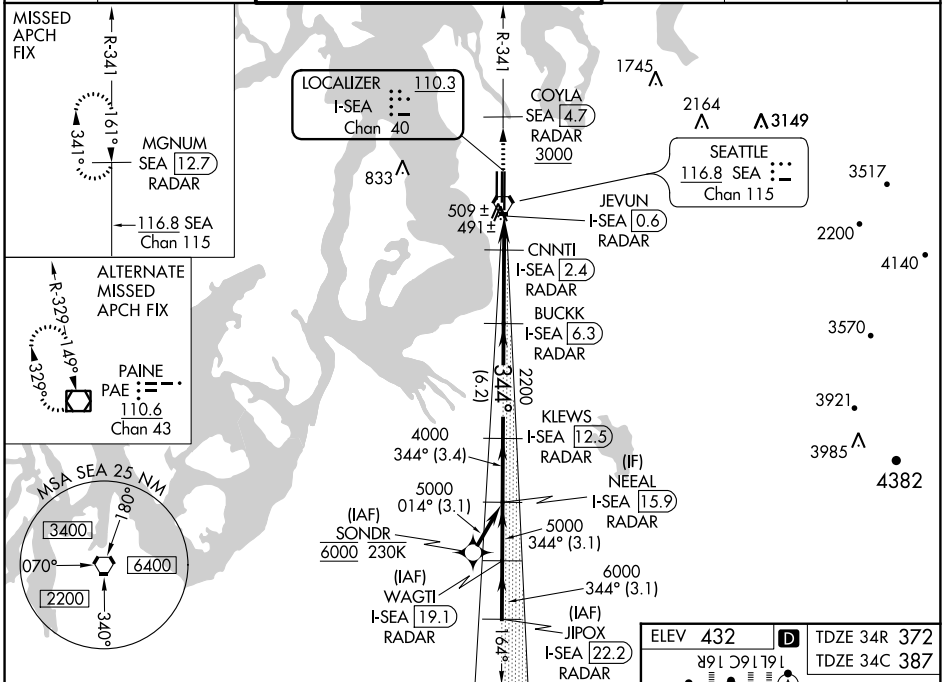
LOC/DME I-SEA <b>110.3</b> Chan <b>40</b>	APP CRS <b>344°</b>	Rwy Idg 11900 <b>9426</b> TDZE <b>372 387</b> Apt Elev <b>432 432</b>	34R 34C
---	------------------------	--	---------

# ILS or LOC RWY 34R

SEATTLE-TACOMA INTL (SEA)

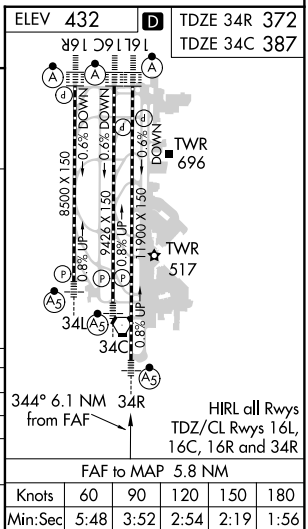
From SONDR: RNAV 1-GPS required. DME or RADAR required.	MALSR Rwy 34R/C	MISSED APPROACH: Climb on heading 343° and outbound on SEA VORTAC R-341 to cross COYLA/ SEA 4.7 DME/RADAR at or above 3000 then climb to 5000 on SEA VORTAC R-341 to MGNUM/SEA 12.7 DME/RADAR and hold, continue climb-in-hold to 5000.
<p>▼ Inop table does not apply to Sidestep 34C Cats A/B. Simultaneous approach authorized with Rwy 34L.</p>		

D-ATIS <b>118.0</b>	SEATTLE APP CON <b>133.65 273.45</b>	SEATTLE TOWER <b>119.9 239.3</b> (Rwys 16L, 16C, 34C, 34R) <b>120.95 239.3</b> (Rwys 16R, 34L)	GND CON <b>121.7</b>	CLNC DEL <b>128.0</b>	CPDLC
------------------------	---	--	-------------------------	--------------------------	-------



VGSI and ILS glidepath not coincident  
(VGSI Angle 2.75/TCH 81).

JIPOX I-SEA <b>22.2</b> RADAR	WAGTI I-SEA <b>19.1</b> RADAR	NEEAL I-SEA <b>15.9</b> RADAR	KLEWS I-SEA <b>12.5</b> RADAR	BUCKK I-SEA <b>6.3</b> RADAR	CNNTI I-SEA <b>2.4</b> RADAR	COYLA SEA <b>12.7</b> SEA <b>3000</b>	5000 SEA R-341	MGNUM SEA <b>12.7</b>	
<p>Use I-SEA DME when on localizer course. *LOC only</p>									
7000		344°		2200		2200		*1040	
GS 2.75°		TCH 60		3.1 NM		3.1 NM		3.4 NM	
6000		5000		4000		6.2 NM		4 NM	
3.1 NM		3.1 NM		3.4 NM		6.2 NM		4 NM	
3.1 NM		3.1 NM		3.4 NM		6.2 NM		4 NM	
3.1 NM		3.1 NM		3.4 NM		6.2 NM		4 NM	
3.1 NM		3.1 NM		3.4 NM		6.2 NM		4 NM	
3.1 NM		3.1 NM		3.4 NM		6.2 NM		4 NM	



NW-1, 28 FEB 2019 to 28 MAR 2019

NW-1, 28 FEB 2019 to 28 MAR 2019