

LOC/DME I-TUC 111.7 Chan 54	APP CRS 344°	Rwy Idg TDZE Apt Elev	34C 9426 387 432	34R 11900 372 432
-------------------------------------------------	------------------------	-----------------------------	------------------------------------------------	-------------------------------------------------

ILS or LOC RWY 34C

SEATTLE-TACOMA INTL (SEA)

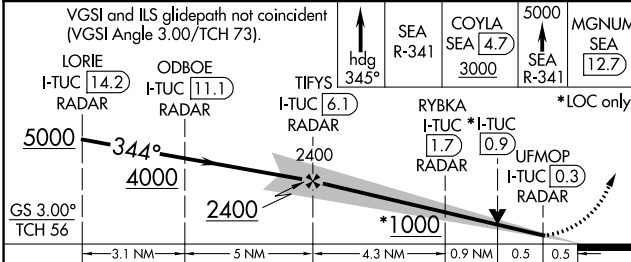
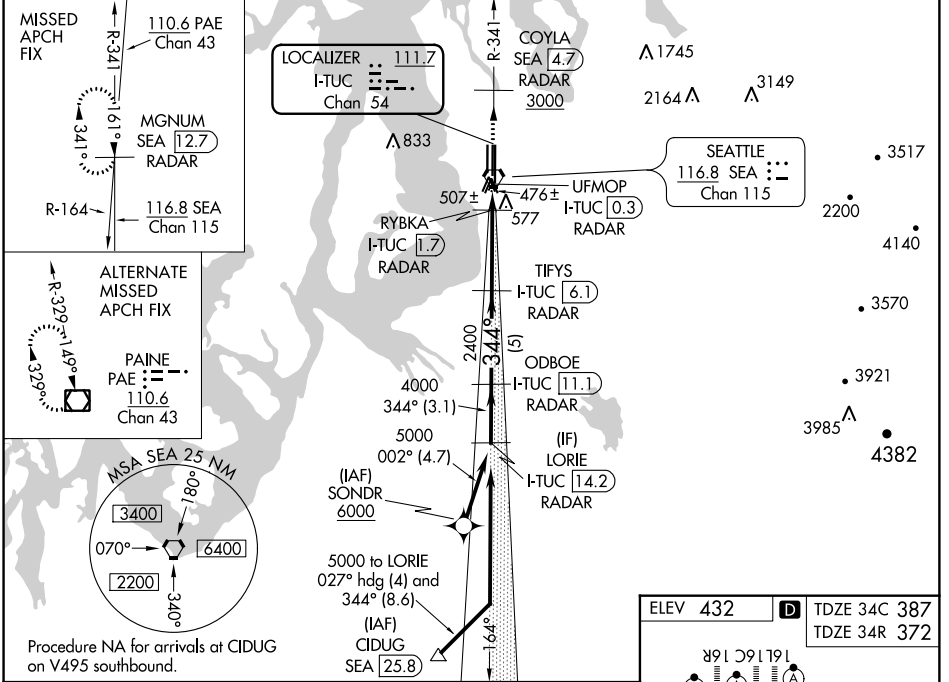
DME or RADAR required.
From SONDR: RNAV 1-GPS required.

MALSR Rwy 34C/R

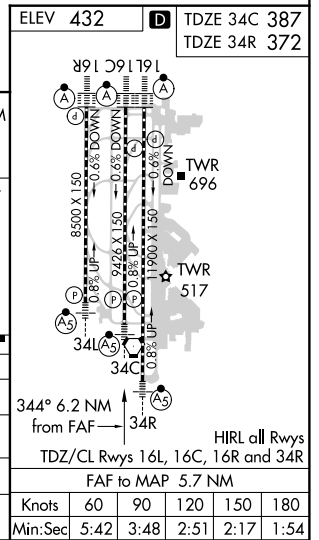
MISSED APPROACH: Climb on heading 345° and outbound on SEA VORTAC R-341 to cross COYLA/SEA 4.7 DME/RADAR at or above 3000 then climb to 5000 on SEA VORTAC R-341 to MGNUM/SEA 12.7 DME/RADAR and hold, continue climb-in-hold to 5000.

⚠ Inop table does not apply to ALS Rwy 34R.
Simultaneous approach authorized with Rwy 34L.

D-ATIS 118.0	SEATTLE APP CON 133.65 273.45	SEATTLE TOWER 119.9 239.3 (Rwys 16L, 16C, 34C, 34R) 120.95 239.3 (Rwys 16R, 34L)	GND CON 121.7	CLNC DEL 128.0	CPDLC
------------------------	-----------------------------------------	------------------------------------------------------------------------------------------------------	-------------------------	--------------------------	-------



CATEGORY	A	B	C	D
S-ILS 34C	604/24		217 (200-½)	
S-LOC 34C	760/24	373 (400-½)	760/35	373 (400-¾)
SIDESTEP 34R	760/50	388 (400-1)	760/60	388 (400-1¼)
CIRCLING	1000-1	568 (600-1)	1000-1½ 568 (600-1½)	1000-2 568 (600-2)



NW-1, 28 FEB 2019 to 28 MAR 2019

NW-1, 28 FEB 2019 to 28 MAR 2019