

LOC/DME I-SNQ <b>110.3</b> Chan 40	APP CRS <b>164°</b>	Rwy Idg <b>11900</b> TDZE <b>432</b> Apt Elev <b>432</b>
--	------------------------	--

# ILS or LOC RWY 16L

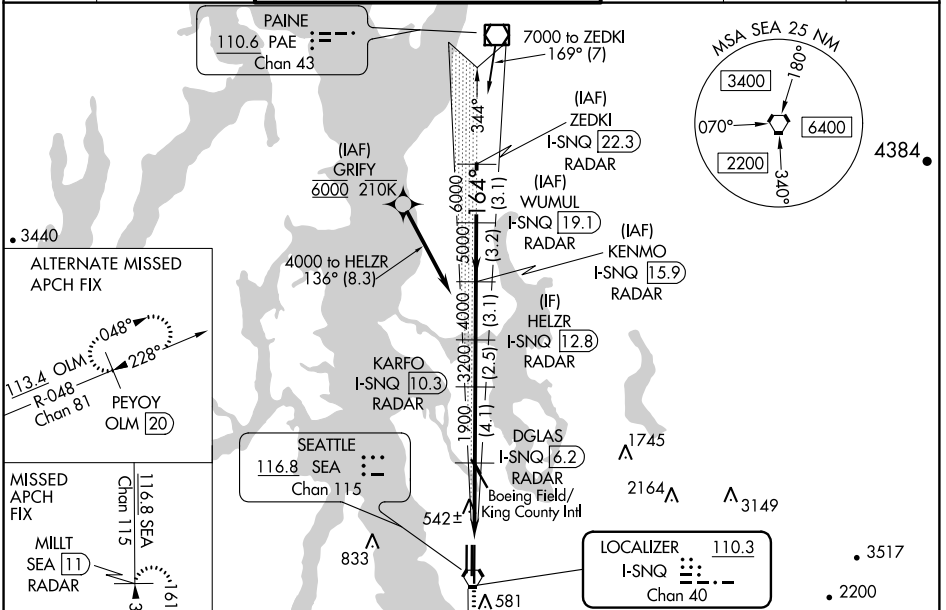
SEATTLE-TACOMA INTL (SEA)

DME or RADAR required. From GRIFY:RNAV 1-GPS required.

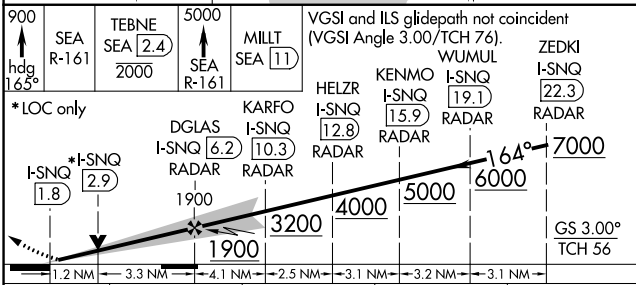
Simultaneous approach authorized with Rwy 16R.

ALSIF-2  
MISSED APPROACH: Climb to 900 on heading 165° then on SEA VORTAC R-161 to cross TEBNE/SEA 2.4 DME/RADAR at or below 2000 then climb to 5000 on SEA VORTAC R-161 to MILLT/SEA 11 DME/RADAR and hold, continue climb-in-hold to 5000.

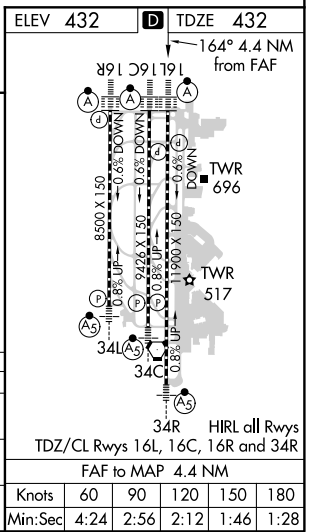
D-ATIS <b>118.0</b>	SEATTLE APP CON <b>133.65 273.45</b>	SEATTLE TOWER <b>119.9 239.3</b> (Rwys 16L, 16C, 34C, 34R) <b>120.95 239.3</b> (Rwys 16R, 34L)	GND CON <b>121.7</b>	CLNC DEL <b>128.0</b>	CPDLC
------------------------	---	--	-------------------------	--------------------------	-------



900 hdg 165°	SEA R-161	TEBNE SEA 2.4 2000	5000 SEA R-161	MILLT SEA 11	VGSI and ILS glidepath not coincident (VGSI Angle 3.00/TCH 76).
--------------------	-----------	-----------------------	-------------------	--------------	--



CATEGORY	A	B	C	D
S-ILS 16L	697/20 265 (300-1/2)	632/18 200 (200-1/2)		
S-LOC 16L	880/24 448 (500-1/2)	880/45 448 (500-3/8)		
CIRCLING	1000-1 568 (600-1)	1000-1 1/2 568 (600-1/2)	1000-2 568 (600-2)	



NW-1, 28 FEB 2019 to 28 MAR 2019

NW-1, 28 FEB 2019 to 28 MAR 2019