

LOC/DME I-TUC 111.7 Chan 54	APP CRS 344°	Rwy ldg TDZE 9426 387 Apt Elev 432
---	------------------------	---

ILS RWY 34C (SA CAT I & II)

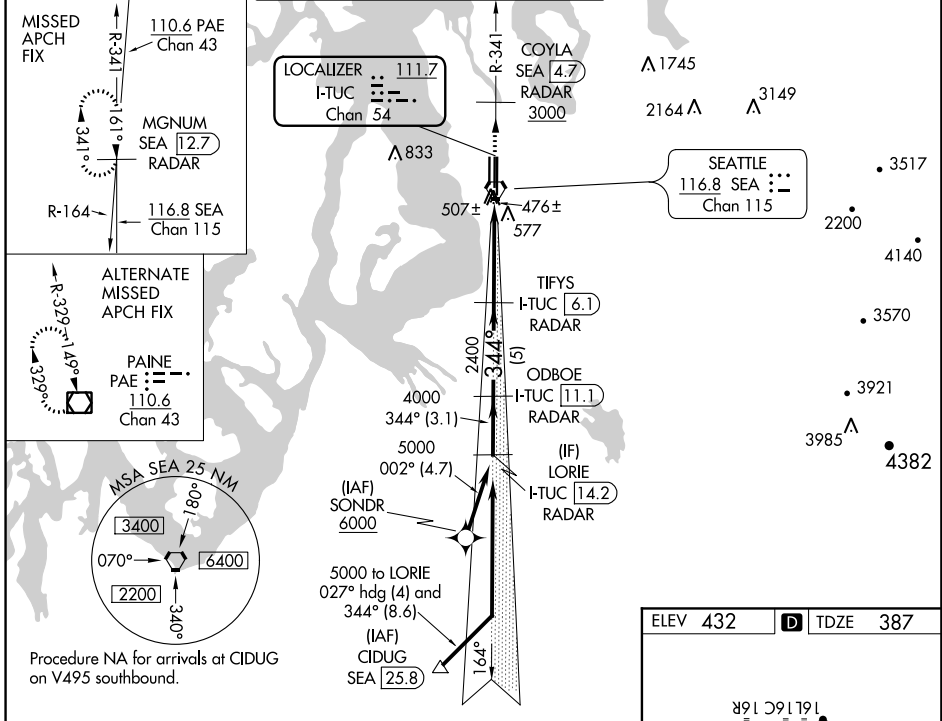
SEATTLE-TACOMA INTL (SEA)

DME or RADAR required. From SONDR: RNAV 1-GPS required.

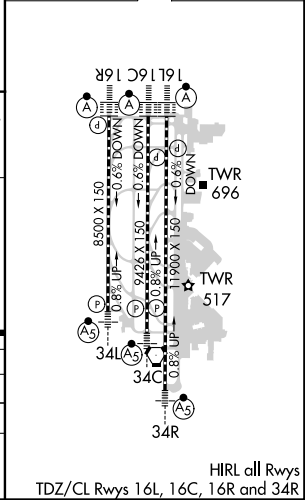
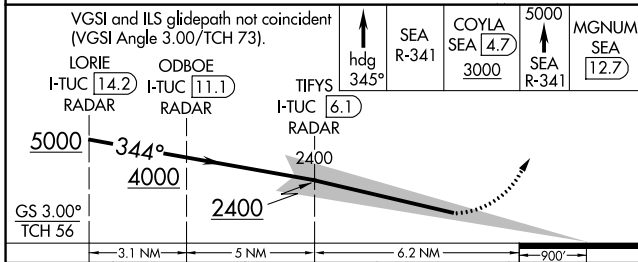
MALS MISSED APPROACH: Climb on heading 345° and outbound on SEA VORTAC R-341 to cross COYLA/SEA 4.7 DME/RADAR at or above 3000 then climb to 5000 on SEA VORTAC R-341 to MGNUM/SEA 12.7 DME/RADAR and hold, continue climb-in-hold to 5000.

Simultaneous approach authorized with Rwy 34L. SA CAT I: Requires specific OPSPEC, MSPEC, or LOA approval and use of HUD to DH. **SA CAT II:** Reduced lighting; Requires specific OPSPEC, MSPEC, or LOA approval and use of autoland or HUD to touchdown.

D-ATIS 118.0	SEATTLE APP CON 133.65 273.45	SEATTLE TOWER 119.9 239.3 (Rwys 16L, 16C, 34C, 34R) 120.95 239.3 (Rwys 16R, 34L)	GND CON 121.7	CLNC DEL 128.0	CPDLC
------------------------	---	--	-------------------------	--------------------------	-------



ELEV 432	D TDZE 387
----------	-------------------



CATEGORY	A	B	C	D
S-ILS 34C	SA CAT I	RA 231/14	150	DA 537
S-ILS 34C	SA CAT II	RA 112/12	100	DA 487

SA CATEGORY I & II ILS - SPECIAL AIRCREW & AIRCRAFT CERTIFICATION REQUIRED

NW-1, 28 FEB 2019 to 28 MAR 2019

NW-1, 28 FEB 2019 to 28 MAR 2019