

LOC/DME I-SNQ <b>110.3</b> Chan <b>40</b>	APP CRS <b>164°</b>	Rwy Idg TDZE <b>432</b> Apt Elev <b>432</b>	<b>11900</b>
---	------------------------	---	--------------

# ILS RWY 16L (SA CAT I)

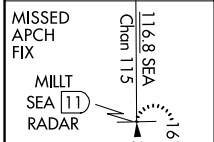
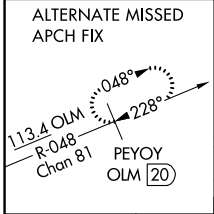
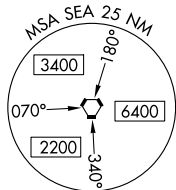
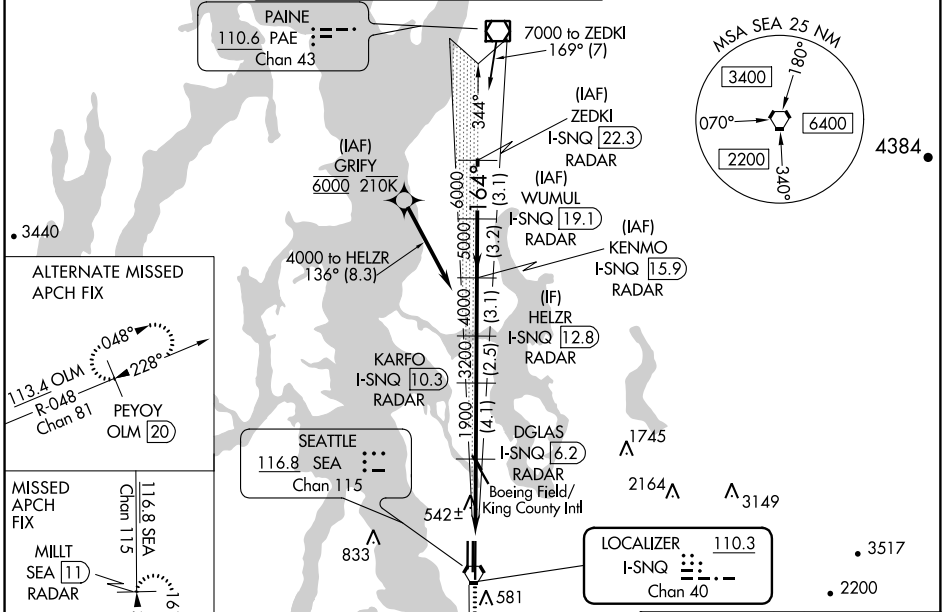
SEATTLE-TACOMA INTL (SEA)

DME or RADAR required. From GRIFY:RNAV 1-GPS required.

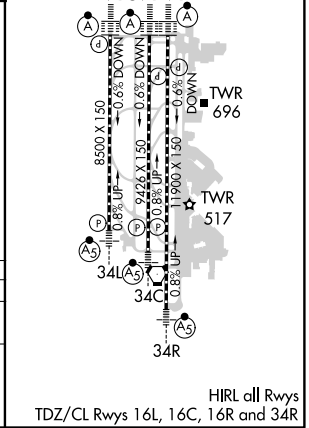
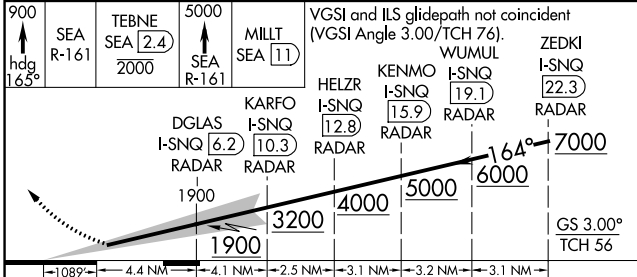
Simultaneous approach authorized with Rwy 16R.  
Requires specific OPSPEC, MSPEC, or LOA approval and use of HUD to DH.

ALSIF-2  
MISSED APPROACH: Climb to 900 on heading 165° then on SEA VORTAC R-161 to cross TEBNE/SEA 2.4 DME/RADAR at or below 2000 then climb to 5000 on SEA VORTAC R-161 to MILLT/SEA 11 DME/RADAR and hold, continue climb-in-hold to 5000.

D-ATIS <b>118.0</b>	SEATTLE APP CON <b>133.65 273.45</b>	SEATTLE TOWER <b>119.9 239.3</b> (Rwys 16L, 16C, 34C, 34R) <b>120.95 239.3</b> (Rwys 16R, 34L)	GND CON <b>121.7</b>	CLNC DEL <b>128.0</b>	CPDLC
------------------------	---	--	-------------------------	--------------------------	-------



ELEV 432	TDZE 432
----------	----------



CATEGORY	A	B	C	D
S-ILS 16L	RA 248/14 150 DA 582			

**SA CATEGORY I ILS - SPECIAL AIRCREW & AIRCRAFT CERTIFICATION REQUIRED**

NW-1, 28 FEB 2019 to 28 MAR 2019