

LOC/DME I-SNQ 110.3 Chan 40	APP CRS 164°	Rwy Idg TDZE 432 Apt Elev 432
--	------------------------	---

ILS RWY 16L (CAT II & III)

SEATTLE-TACOMA INTL (SEA)

DME or RADAR required. From GRIFY:RNAV 1-GPS required.

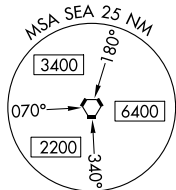
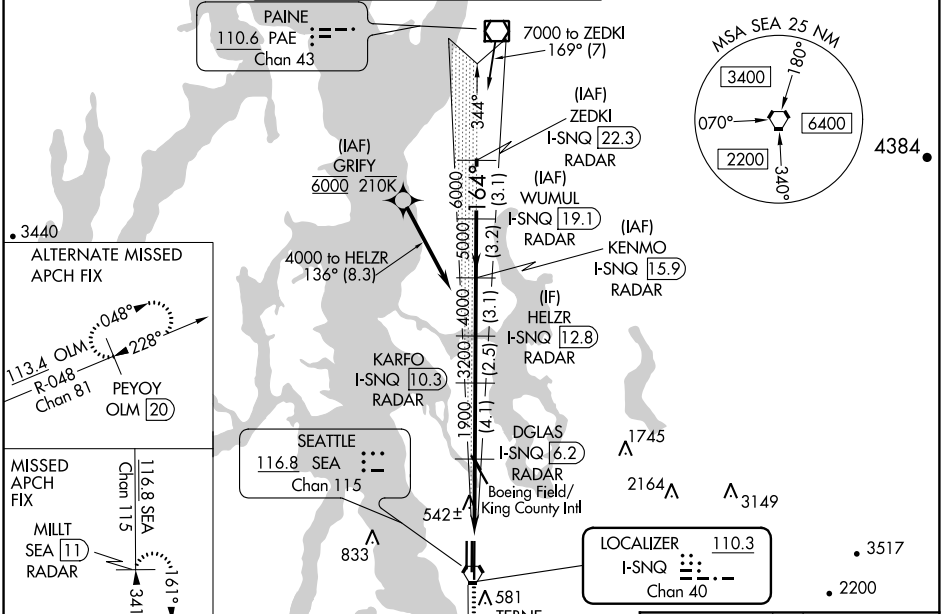
Simultaneous approach authorized with Rwy 16R. Cat II: RVR 1000 authorized with specific OPSPEC, MSPEC, or LOA approval and use of Autoland or HUD to touchdown.

ALSIF-2



MISSED APPROACH: Climb to 900 on heading 165° then on SEA VORTAC R-161 to cross TEBNE/SEA 2.4 DME/RADAR at or below 2000 then climb to 5000 on SEA VORTAC R-161 to MILLT/SEA 11 DME/RADAR and hold, continue climb-in-hold to 5000.

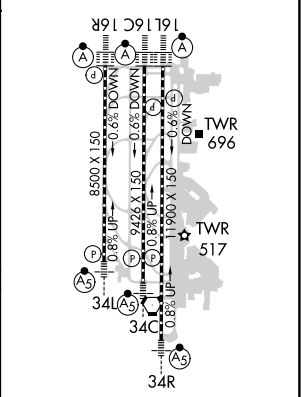
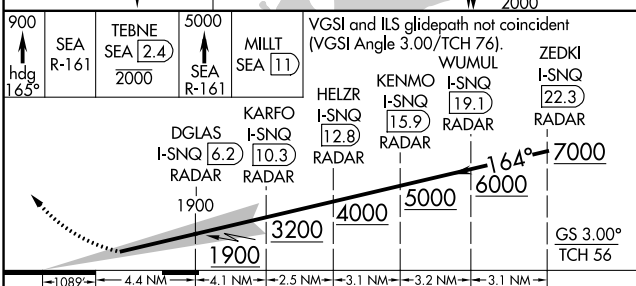
D-ATIS 118.0	SEATTLE APP CON 133.65 273.45	SEATTLE TOWER 119.9 239.3 (Rwys 16L, 16C, 34C, 34R) 120.95 239.3 (Rwys 16R, 34L)	GND CON 121.7	CLNC DEL 128.0	CPDLC
------------------------	---	--	-------------------------	--------------------------	-------



NW-1, 28 FEB 2019 to 28 MAR 2019

NW-1, 28 FEB 2019 to 28 MAR 2019

ELEV 432	TDZE 432
----------	----------



CATEGORY	A	B	C	D
S-ILS 16L	CAT II RA 176/12 100 DA 532			
S-ILS 16L	CAT III RVR 03			

CATEGORY II & III ILS - SPECIAL AIRCREW & AIRCRAFT CERTIFICATION REQUIRED