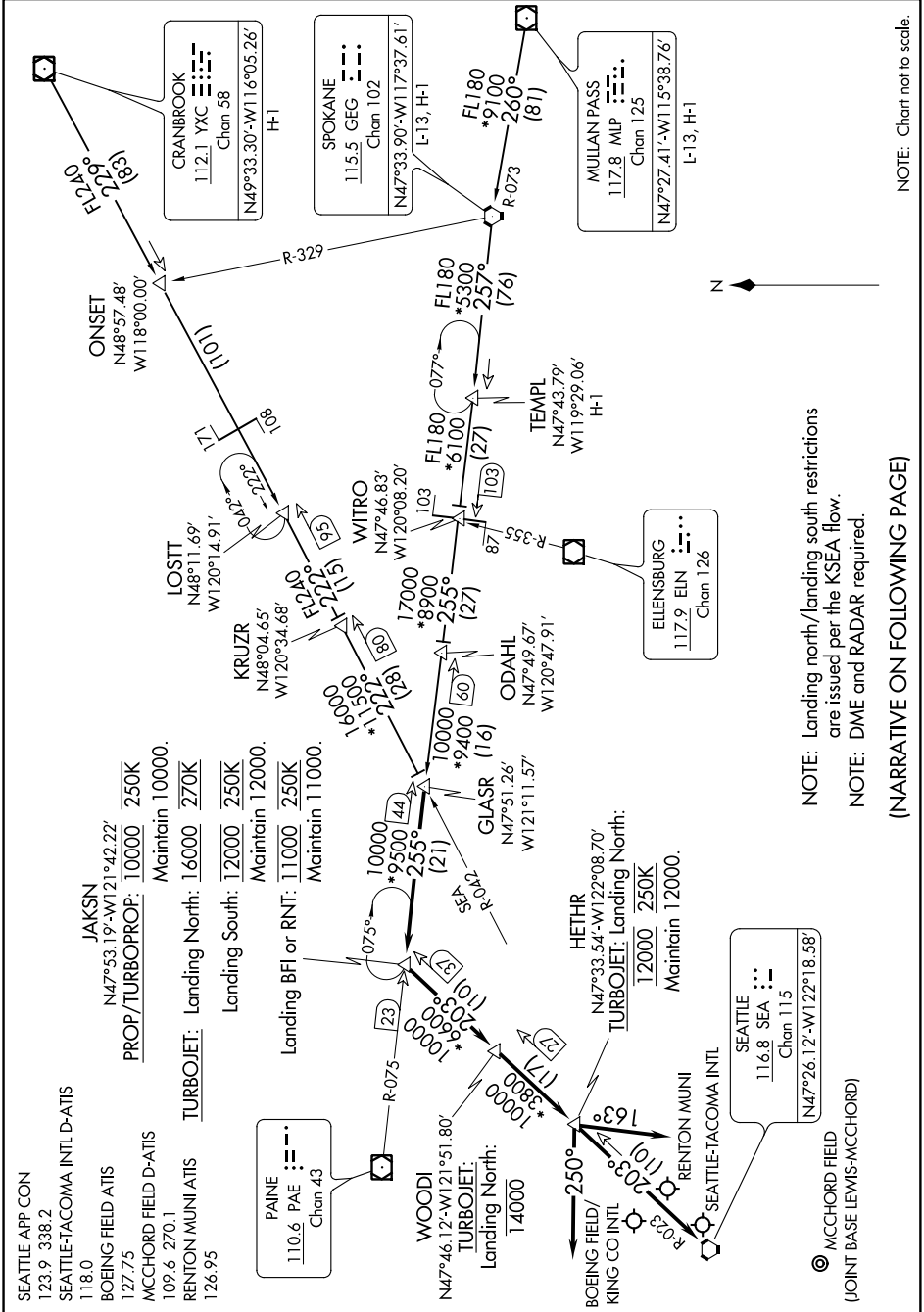


GLASR ONE ARRIVAL

AL-582 (FAA)

SEATTLE, WASHINGTON

NW-1, '18 FEB 2019 to 28 MAR 2019



NOTE: Chart not to scale.

NOTE: Landing north/landing south restrictions are issued per the KSEA flow.
NOTE: DME and RADAR required.

(NARRATIVE ON FOLLOWING PAGE)

NW-1, '18 FEB 2019 to 28 MAR 2019

GLASR ONE ARRIVAL

SEATTLE, WASHINGTON