

(SEBBY3.DAG) 18200

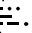
# SEBBY THREE DEPARTURE

AL-237 (FAA)

LOS ANGELES INTL (LAX)  
LOS ANGELES, CALIFORNIA

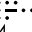
D-ATIS DEP  
135.65  
CLNC DEL  
120.35 327.0  
CPDLC  
GND CON  
(N) 121.65 327.0  
(S) 121.75 327.0  
(W) 121.4 327.0  
LOS ANGELES TOWER  
(N) 133.9 239.3  
(S) 120.95 379.1  
SOCAL DEP CON  
124.3 363.2 (045°-224°)  
125.2 263.025 (225°-044°)

**TOP ALTITUDE:  
ASSIGNED BY ATC**

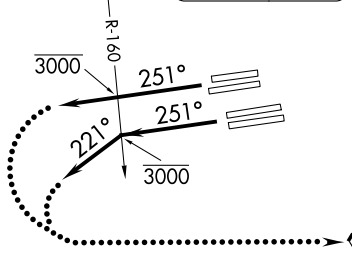
DAGGETT  
113.2 DAG   
Chan 79  
N34°57.75'-W116°34.69'  
L-7, H-4

SEBBY  
N34°05.38'  
W117°46.62'  
16000

**TAKEOFF MINIMUMS**  
Rwys 6L/R, 7L/R: NA-Operational.  
Rwys 24L/R, 25L/R: Standard.

SEAL BEACH  
115.7 SLI   
Chan 104  
N33°47.00'-W118°03.29'  
14000

SANTA MONICA  
110.8 SMO   
Chan 45



**TURN MANDATORY FOR  
ATC SEPARATION**

South complex turn at SMO R-160 to 221° is required for ATC separation.

NOTE: DME and RADAR required.

NOTE: Chart not to scale.

SW-3, 28 FEB 2019 to 28 MAR 2019

SW-3, 28 FEB 2019 to 28 MAR 2019

## DEPARTURE ROUTE DESCRIPTION

**TAKEOFF RUNWAYS 24L/R:** Climb on heading 251° to cross SMO VOR/DME R-160 at or below 3000, thence. . . .

**TAKEOFF RUNWAYS 25L/R:** Climb on heading 251°, at the SMO VOR/DME R-160 turn left heading 221°, cross SMO R-160 at or below 3000, thence. . . .

. . . .on RADAR vectors to cross SLI VORTAC at or above 14000, then on SLI R-022 to cross SEBBY/23 DME FIX at or above 16000. Then on DAG R-214 to DAG VORTAC. All aircraft expect further clearance to filed flight level five minutes after departure.

**LOST COMMUNICATIONS:** If not in contact with Departure Control within five minutes after departure, turn left direct SLI VORTAC and proceed on assigned route, climb to FL230 or filed altitude whichever is lower. Aircraft filed FL240 or above climb to filed altitude ten minutes after departure.

# SEBBY THREE DEPARTURE

(SEBBY3.DAG) 19JUL18

LOS ANGELES, CALIFORNIA  
LOS ANGELES INTL (LAX)