


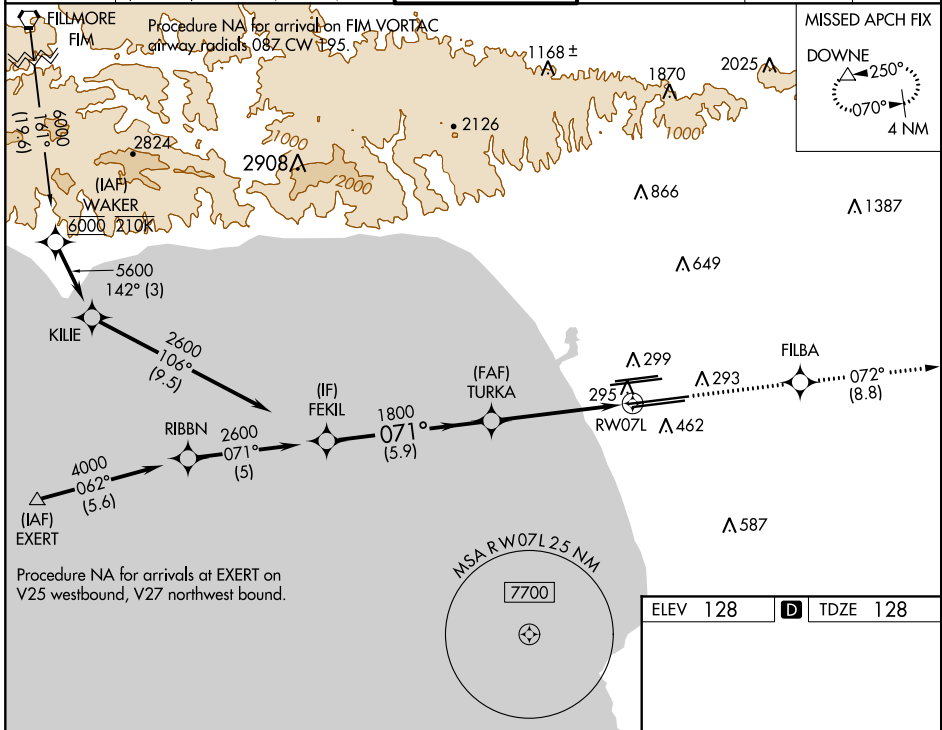
WAAS CH 42504 W07A	APP CRS 071°	Rwy Idg TDZE 128 Apt Elev 128	11259
---------------------------------	------------------------	---	--------------

RNAV (GPS) Y RWY 7L

LOS ANGELES INTL (LAX)

<p>▼ For uncompensated Baro-VNAV systems, LNAV/VNAV NA below 5°C (41°F) or above 54°C (130°F). DME/DME RNP -0.3 NA. LNAV procedure NA during simultaneous operations. Use of FD or AP providing RNAV track guidance required during simultaneous operations. Simultaneous approach authorized.</p>	<p>MALSR</p> 	<p>MISSED APPROACH: Climb to 3000 direct FILBA and on track 072° to DOWNE and hold.</p>
---	--	---

D-ATIS ARR 133.8 DEP 135.65	SOCAL APP CON 124.3 363.2 (APCH FM WEST) 124.5 235.975 (225°-044°)	APP CON 124.9 269.0 (090°-224°) 128.5 360.7 (045°-089°)	LOS ANGELES TOWER N 133.9 239.3 S 120.95 379.1	GND CON N 121.65 327.0 S 121.75 327.0 W 121.4 327.0	CLNC DEL 120.35 327.0	CPDLC
---	--	---	--	---	---	-------



SW-3, 28 FEB 2019 to 28 MAR 2019

SW-3, 28 FEB 2019 to 28 MAR 2019

<p>VGSI and RNAV glidepath not coincident (VGSI Angle 3.00/TCH 83).</p>				<p>3000</p>	<p>FILBA</p>	<p>tr 072°</p>	<p>DOWNE</p>		
<p>GP 3.00° TCH 59</p>	<p>FEKIL</p>	<p>TURKA</p>	<p>RW07L</p>	<p>*1.1 NM to RW07L *LNAV only</p>					
<p>5.9 NM</p>		<p>4 NM</p>		<p>1.1 NM</p>					
CATEGORY	A	B	C	D					
LPV DA	344/18		216 (300-½)						
LNAV/VNAV DA	464/30		336 (400-⅝)						
LNAV MDA	560/24		432 (500-½)		560/40			432 (500-¾)	

ELEV 128	D	TDZE 128
----------	----------	----------